

## *A Trip Through Time in Basketweaving*

Take a brief trip through time to discover the evolution of basket weaving. From using natural materials grown in the area where the weavers were living to how most basket weavers currently weave with prepared supplies. Instructor will show a variety of styles of baskets and how some of them are woven. Samples of various styles of weaving will be available to see and with an overview of gathering supplies. Deciding how a basket would be used also determines what materials to use in making the basket and how it will be shaped. Finally, a simple basket is demonstrated during the class to give an idea of how a basket is actually made. (Class limit: 25)

Mon 2/21/22, 10:00 AM-11:30 AM

*American Lutheran Church  
631 26 1/2 Road  
Grand Junction, CO 81506*

Julie Kleinrath



Julie has been weaving since 1990 and teaching since 1993. She published her first book in 2010.

## *Aging with Grace*

Using poetry as a catalyst the class will discuss issues related to aging, including questions such as one raised in Mary Oliver's poem, "The Summer Day," that asks, "Tell me, what is it you plan to do with your one wild and precious life?" Other poets will help us explore the impact of grief and loss, fears about aging, seeking and giving support as we age, and our views of the future. (Class limit: 12)

Tue 3/1/22, 9:30 AM-11:30 AM

*Zoom*

Lyn Fraser



Lyn has taught at Texas A&M University and Colorado Mesa University. She is the author of two books on the psalms and a mystery novel.

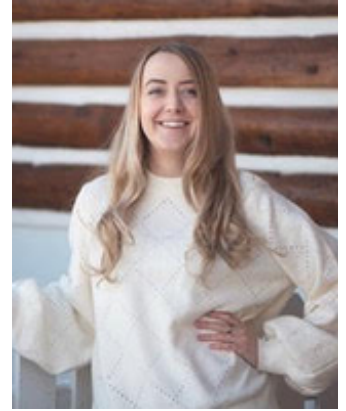
## *Atomic Legacy Cabin and History of Uranium on the Colorado Plateau*

Would you like to know more about Grand Junction's role in the Manhattan Project? This course will delve into the story of the Atomic Legacy Cabin beginning in World War II and throughout the Cold War to the present. The class will discover how uranium changed Grand Junction at a critical time in the nation's history and learn about the mission of the U.S. Department of Energy Office of Legacy Management today. (Class limit: 100)

Thu 2/17/22, 10:00 AM-11:30 AM

*Zoom*

Ashton Peterhans



Ashton is an Interpretive Specialist and contractor for the DOE Office of Legacy Management.

## *Australia; Flora/Fauna/Penguins*

Australia has some of the most unique flora and fauna on Earth. This talk will focus on the ecology of Southern Australia and Tasmania. Come learn about the misunderstood Tasmanian Devil and the Little Blue Penguin, the smallest species of penguins, that colonize along the south shores of Australia as we take a virtual tour down under. (Class limit: 30)

Wed 3/16/22, 10:00 AM-11:30 AM

*Unitarian Universalist Sanctuary  
536 Ouray Avenue  
Grand Junction, CO 81501*

Claudette Moore



Claudette is a retired aquatic ecologist who enjoys traveling and sharing her adventures.

## *Bargaining with Patriarchy*

Patriarchy is often discussed as harming women, but it turns out to be more complicated. While patriarchy disadvantages women as a group, many women make bargains to reap individual benefits from it. And, while patriarchy advantages men as a group, it negatively affects many men as individuals. These realities make conversation about gender inequality fraught with tension and misunderstanding. In this class, you will interact with Colorado Mesa University students as we explore the complexities of gender inequality. (Class limit: 35)

Thu 3/17/22, 1:15 PM-3:15 PM

Brenda Wilhelm, PhD

*Unitarian Universalist Sanctuary  
536 Ouray Avenue  
Grand Junction, CO 81501*



Professor of Sociology,  
Colorado Mesa University.

## *Beginner/Refresher Zoom Class*

This class is for members who have registered for a class offered on Zoom who are unfamiliar with Zoom or want a review of the Zoom features used in New Dimensions classes. Functions like raising hands, participating in chat, how to mute and unmute yourself, ways to customize your view, and the use of video filters and backgrounds will be covered. Zoom can be used on a computer, tablet, or smartphone and this session will provide instruction for these different devices. (Class limit: 30)

Mon 2/7/22, 10:00 AM-11:00 AM

Dave Karisny

Paul Van Camp

*Zoom*

Tech Support for New  
Dimensions

Tech support for New  
Dimensions

## *Beginning American Mah Jongg*

Learn the basics of American Mah Jongg using the National Mah Jongg Associations card of possible hands. By the end of the sessions you will be playing Mah Jongg. Participants will be expected to purchase the 2021 card of Mah Jongg hands for \$9 payable at the first class. (Class limit: 16)

Tue 2/8/22, 9:00 AM-11:00 AM  
Tue 2/15/22, 9:00 AM-11:00 AM  
Tue 2/22/22, 9:00 AM-11:00 AM  
Tue 3/1/22, 9:00 AM-11:00 AM

*First Congregational Church  
1425 North 5th Street  
Grand Junction, CO 81501*

Kim Sutherland



Kim is an experienced player and instructor of Mah Jongg.

## *Beginning Bridge*

Bridge is the Best. Card. Game. Ever.

This class will be geared to those who have never played bridge and to those who have minimal exposure to bridge. Lessons will be based on the book, "Bridge for Everyone", D. W. Crisfield, available for purchase at Out West Books, 533 Main Street. Purchase of the book is optional. (Class limit: 12)

Mon 3/7/22, 10:00 AM-12:00 PM  
Fri 3/11/22, 10:00 AM-12:00 PM  
Mon 3/14/22, 10:00 AM-12:00 PM  
Fri 3/18/22, 10:00 AM-12:00 PM

*American Lutheran Church  
631 26 1/2 Road  
Grand Junction, CO 81506*

JoLynn Phillips



JoLynn has played bridge for many years and helped teach it, too.

## *Beginning Genealogy*

Learn How to Research your family tree using Ancestry Library Edition and other genealogy resources. This class is for beginning genealogists. Must have computer skills. (Class limit: 8)

Wed 2/9/22, 2:00 PM-3:30 PM

*Computer Lab at the Central Library  
443 N. 6th Street  
Grand Junction, CO 81501*

Noel Kalenian



Noel is the Patent and Trademark Resource Center Librarian at Mesa County Libraries.

## *Birding: April Migration in the Grand Valley*

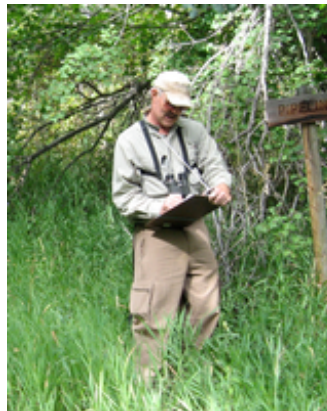
The class will travel to various birding sites and hotspots in the Grand Valley looking for migrating waterfowl, raptors, shorebirds, and early migrating songbirds. In addition we should find some local birds that have already begun nesting. Participants must be able to walk a mile over uneven trails and will need to provide their own binoculars. (Class limit: 10)

Tue 4/5/22, 8:00 AM-12:00 PM  
Tue 4/12/22, 8:00 AM-12:00 PM  
Tue 4/19/22, 8:00 AM-12:00 PM

*Each class will meet on the west side of Canyon View Park (24 Road side) in the parking lot near the softball fields.*

*Class will be held at various outdoor sites which will be emailed to participants.*

Mike Henwood



Colorado Ornithologists; Field guide Audubon of Greater Denver and the Grand Valley

Kathleen McGinley



Avid birder, assists with Grand Valley Audubon field trips.



## *Birding: Early Spring Migration in the Grand Valley*

The class will travel to various birding sites and hotspots in the Grand Valley looking for migrating waterfowl, raptors, shorebirds, and wintering songbirds. In addition, we should find some local raptors that have begun nesting. Participants must be able to walk a mile over uneven terrain and provide their own binoculars. (Class limit: 10)

Wed 3/16/22, 8:00 AM-12:00 PM  
Wed 3/23/22, 8:00 AM-12:00 PM  
Wed 3/30/22, 8:00 AM-12:00 PM

*Each class will meet on the west side of Canyon View Park (24 Road side) in the parking lot near the softball fields.*

*Class will be held at various outdoor sites which will be emailed to participants.*

Mike Henwood



Colorado Ornithologists; Field guide Audubon of Greater Denver and the Grand Valley

Kathleen McGinley



Avid birder, assists with Grand Valley Audubon field trips.

## *CBD Panacea, Placebo or Pharma Phyto Prank*

Recognize the differences between the two wildly popular products, CBD and THC. Understand the research on the effectiveness and safety of CBD. Become aware of the convoluted laws and the FDA's wishy-washy stance on CBD and be able to make an informed decision about personally buying and consuming CBD. (Class limit: 50)

Mon 2/14/22, 10:00 AM-11:30 AM

*ZOOM*

Phil Mohler



Retired family physician.

## *Care for Colorado Program: Protecting Outdoor Resources Through Responsible Travel*

Learn how the Colorado Tourism Office is helping protect Colorado's precious outdoor resources through this first-of-its-kind partnership between the state office and Leave No Trace. Find out how you can be involved in educating visitors and residents on the importance of responsible travel. (Class limit: 35)

Wed 2/9/22, 4:30 PM-5:30 PM

*American Lutheran Church  
631 26 1/2 Road  
Grand Junction, CO 81506*

Barb Bowman



Barb Bowman is a Stewardship Contractor for the Colorado Tourism Office.

## *Case Study: Alpine Bank's Green Recycling Best Practices and Solid Waste Management in Mesa County*

Learn how Alpine Bank's Environmental Management System has helped the organization take steps toward its environmental stewardship goals. Plus, learn how you can take advantage of services offered by Mesa County Solid Waste Management to bring your own environmental stewardship goals to fruition. (Class limit: 30)

Thu 3/10/22, 3:30 PM-5:00 PM  
Thu 3/17/22, 3:30 PM-5:00 PM

*Koinonia Church - Sanctuary  
730 25 Road  
Grand Junction, CO 81505*

Thu 3/24/22, 3:30 PM-5:00 PM

*OPTIONAL TOUR:  
Mesa County Recycling Center, at County Landfill site  
3071 US-50  
Grand Junction, CO 81503*

Jennifer Richardson



Jennifer is the Solid Waste/Sustainability Director for Mesa County.

David Miller



Senior Vice President and Green Team Chairperson at Alpine Bank

## *Catholic Outreach in the Community*

The class will include:

- The History of Catholic Outreach and how programs have evolved responding to community needs.
- Homelessness and the growth of needs of those who are homeless and how the community and Catholic Outreach have joined forces to deal with those growing needs.
- The problem of hunger in our community and the role Catholic Outreach plays in meeting that need. (Class limit: 35)

Mon 2/28/22, 10:00 AM-11:30 AM

*Unitarian Universalist Sanctuary  
536 Ouray Avenue  
Grand Junction, CO 81501*

Beverly Lampley



Catholic Outreach Director of  
Development &  
Communication.



## *Center for Independence: Hands-on Vision Assistive Technology Lab*

Aging and health difficulties can impair vision, hearing, strength, and mobility, all of which can challenge a person's ability to live independently. Fortunately there are services and assistive technologies that can help. The Center for Independence (CFI) offers a variety of programs and services to assist people with disabilities to live more independently. The class will start with Linda Taylor providing an overview of the programs and service provided by CFI. Linda's lecture will be followed by a hands-on laboratory where Joanne Stamp will present vision assistive technologies ranging from simple, low-tech options such as changing the color spectrum of lighting or the use of different colored eyeglass lenses to more sophisticated technologies such as text magnification systems that use your large flat screen television or a free app that converts your smartphone into a talking camera that reads text aloud.

The class will be held in the gymnasium at the Center for Independence. As a Covid protocol, entry to the CFI requires a non-contact temperature scan and answering several health questions similar to those currently required to enter any healthcare facility in Grand Junction. (Class limit: 25)

Fri 3/4/22, 10:00 AM-12:00 PM

*Center for Independence  
Gymnasium  
740 Gunnison Ave.  
Grand Junction, CO 81501*

Linda Taylor



Linda is Executive Director  
for the Center for  
Independence

Joanne Stamp



Joanne is the CFI Low Vision  
& Senior Programs Manager

## *Chinese Inner Asia*

"Chinese Inner Asia" explores the historical, social, and ethnic connections between China and Inner Asia. It focuses particularly on ethnic groups in the People's Republic of China that are generally considered Inner Asian, namely Tibetans, Uyghurs, and Mongols. The presentation explores the culture of these groups and the place they find themselves in in the modern PRC. It broadly familiarizes the audience with the multi-ethnic nature of modern China, as well as provides some basic understanding of three large minority groups that are not ethnically or culturally Chinese. (Class limit: 60)

Wed 2/9/22, 11:00 AM-12:00 PM

*Zoom*

Michael Krautkraemer



Michael has his Ph.D. in Central Eurasian Studies at Indiana University.

## *Chipeta, a Ute Leader*

We will look at the life of Ute leader Chipeta. We'll learn about her as a youngster, then about her marriage and family life with Ouray, and after Ouray's death in 1880. Finally we will learn about her later years when she became a frequent spokeswoman for the Uncompahgre Utes who were forced to move to Utah. (Class limit: 50)

Mon 3/7/22, 10:00 AM-11:30 AM

*Unitarian Universalist Sanctuary  
536 Ouray Avenue  
Grand Junction, CO 81501*

Bob Silbernagel



Author, retired journalist, and frequent contributor to the Daily Sentinel.

## *Cosmology, An Introduction*

Humans have looked up at the stars and pondered the origin of the universe for thousands of years. Only since the early 20th Century have scientists developed modern theories and observational instruments to pursue these big questions. Cosmology, a branch of physics, is the field of study that explores the beginning and evolution of the universe. This class covers the current theory and observational evidence to support it. What are the new developments in our efforts to peer into the distance and past? And how will we answer the open questions? (Class limit: 40)

Wed 2/23/22, 2:00 PM-3:30 PM  
Fri 2/25/22, 2:00 PM-3:30 PM

*Koinonia Church - Sanctuary*  
730 25 Road  
Grand Junction, CO 81505

Scott Perrin



Scott is an amateur cosmologist with graduate level course work in physics and astrophysics.

## *Crime Fiction: Move Over, Miss Marple*

The class will discuss a popular and expanding sub-genre of crime fiction that features protagonists in their 70's, 80's, and 90's. Participants will be asked to read one mystery novel as an optional assignment for class discussion, and the title will be sent as soon as the instructor has a class list. As always, the class discussion will include members' current reading interests and preferences. (Class limit: 13)

Thu 3/3/22, 9:30 AM-11:30 AM

*Zoom*

Lyn Fraser



Lyn has taught at Texas A&M University and Colorado Mesa University. She is the author of two books on the psalms and a mystery novel.

## *Defending Democracy – National, State and Local Actions of the League of Women Voters.*

What opportunities for action does the League of Women Voters provide that are in service of defending democracy? We will consider:

1. LWV position on key issues with examples of specific actions the League has taken based on those positions and the outcomes
2. Presentation from the LWV Colorado Action Committee on upcoming legislation and what position and actions LWV Colorado is taking
3. A discussion of what other local leagues in CO are taking
4. Break out session where individuals will be led through a discussion guide to discuss possible actions at the local level. (Class limit: 50)

Mon 3/14/22, 10:00 AM-11:30 AM

*Unitarian Universalist Sanctuary  
536 Ouray Avenue  
Grand Junction, CO 81501*

Jan Moorman



Jan Moorman is currently the president of the Mesa County chapter, League of Women Voters

## *District 51 Update*

Dr. Diana Sirko and Dr. Brian Hill, Superintendent and Assistant Superintendent of School District 51, will provide an update on current events facing the district. As COVID 19 continues to demand day-to-day decisions for the safety of all students and employees, they will update us on the latest information and challenges in that area. (Class limit: 50)

Fri 2/18/22, 2:00 PM-3:30 PM

*School District 51  
Harry Butler Board Room  
455 North 22nd Street  
Grand Junction, CO 81501*

Dr. Diana Sirko



School District 51  
Superintendent

Dr. Brian Hill



Assistant Superintendent of  
School District # 51, will be  
superintendent starting in  
June, 2022.

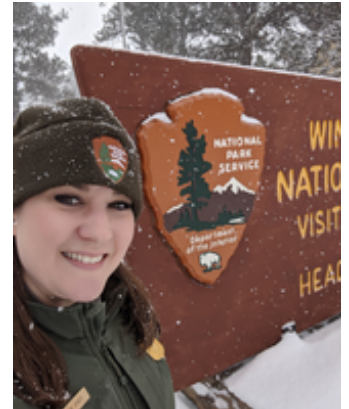
## *Exploring an Ancient Maze Cave in Wind Caves National Park*

Come learn how the Maze Cave was formed in the Wind Cave National Park of South Dakota. It is one of the longest caves in the world. Learn about unique features from formations to fossils. (Class limit: 60)

Wed 2/23/22, 9:00 AM-10:30 AM

*Zoom*

Lorene Hynes



Wind Cave National Park  
Education Coordinator

## *Folktales of the Southwest*

Every culture communicates its humor, fears, aspirations, and wisdom in the stories that it shares from generation to generation. This is no different for the Native, Spanish and American pioneers, all three of whom made the American Southwest their home. Their oral stories, tall tales, folk tales, and legends give us a glimpse of who they were, what they thought and how they interacted with the land and each other. (Class limit: 40)

Tue 2/15/22, 10:30 AM-12:30 PM

*Koinonia Church - Sanctuary  
730 25 Road  
Grand Junction, CO 81505*

Peter Booth PhD



Retired museum professional  
who loves the study of  
history and culture of diverse  
peoples.

## *Geologic Driving Tour of Colorado National Monument*

The driving tour will give an overview of the geologic concepts and processes that created and continue to shape the Colorado National Monument. The tour will stop at five locations where Larry Anna, a Professional Geologist, will explain the processes that formed and shaped the various rock strata resulting in the incredible beauty of the Monument. He will also discuss how the Monument fits in with the forming of the Grand Valley. A handout will aid identifying the different rock strata and the instructor will explain the processes that formed the different rock layers. The instructor will point out areas of rock folding and faulting.

This is a carpool tour and includes short easy walks. The carpool is limited to 4 vehicles because one of the stops has very limited space to safely park. Participants must be prepared to carpool with others in the class.

Class on Tuesday, Mar 8, 2022 (Class limit: 14):

Tue 3/8/22, 9:00 AM-12:00 PM

*Meet at the Monument Village Shopping Center parking lot  
2148 Broadway*

*This shopping center is west of the Redlands Parkway/Broadway (HWY 340)  
roundabout.*

- OR -

Class on Wednesday, Mar 16, 2022 (Class limit: 14):

Wed 3/16/22, 9:00 AM-12:00 PM

*Meet at the Monument Village Shopping Center parking lot  
2148 Broadway.*

*This shopping center is west of the Redlands Parkway/Broadway (HWY 340)  
roundabout.*

Lawrence Anna



Larry Anna is a professional geologist with 35+ years of experience including groundwater.



## *Grand Valley Project: 105 years of Irrigation in the Grand Valley*

In this class you will learn about the formation of the Grand Valley Water Users Association (GVWUA) and the history of the project that includes the Grand Valley Diversion Dam and the 55-mile-long Government Highline Canal. The GVWUA was formed in 1905 in response to the Colorado General Assembly legislation that authorized the formation of local associations to develop federal irrigation projects in agreement with the US Reclamation Act of 1902. In its 105 years, this initial project instituted and the GVWUA has maintained irrigation in the Grand Valley with 130 miles of laterals, 100+ miles of drainage ditches and a partnership in a hydroelectric power plant. (Class limit: 35)

Thu 2/10/22, 10:00 AM-11:00 AM

*Eureka! McConnell Science Museum  
1400 North 7th Street  
Grand Junction, CO 81501*

Mark Harris



General Manager Grand  
Valley Water Users  
Association

## *Hike into Surprise Canyon*

Are you ever tempted to explore off of a familiar well-traveled trail? If you are a bit adventurous, I will lead you to a place I call "Surprise Canyon". It is a moderately strenuous 5-mile round trip. Much of the walking is in a stream bed, assuming there is no water, and the rock-filled path requires your attention. Bring a hiking pole or poles if your balance is not what it was when you were 18 years old. The return requires a fairly long uphill "slog" that is doable at my slow pace. Meet at the "No Thoroughfare" trail head just past the East entrance to the Monument. Park at one the two Devil's Kitchen parking lots and gather near the trailhead sign at the upper end of the smaller (east) parking lot at 9:00 AM. Plan to return around noon.

When choosing hikes or nature walks, we encourage you to read the course descriptions carefully and be honest when evaluating your capability to participate. Please consider whether: you are adapted to the elevation; you have been hiking or walking regularly; you usually hike or walk a similar distance and on the types of terrain described; you have balance or breathing issues; and you can keep up with a group; etc. Your careful consideration of these factors will ensure that you will be able to complete the hike or walk as described without any serious issues. (Class limit: 12)

Fri 3/18/22, 9:00 AM-12:00 AM

*Meet at the "No Thoroughfare" trailhead sign near the east entrance to the Colorado Monument.  
This sign is at the upper end of the east parking lot for Devil's Kitchen.*

Michael Wallace



Passionate to discover whatever is around the next bend in the trail and over that hill.

## *Historical Stories of West Montrose County Colorado*

Jane Thompson and her sister Sharon will present life in West Montrose County, Colorado. Stories will include who were the Rimrockers, the story of the man buried in Paradox without his head, the Bedrock store that is the oldest in Colorado, and many more tales of history. (Class limit: 25)

Thu 2/17/22, 10:30 AM-12:30 PM

*American Lutheran Church  
631 26 1/2 Road  
Grand Junction, CO 81506*

Jane Thompson



Jane, President of the Rimrocker Historical Society Of Western Montrose County, and her sister, Sharon, present programs in Montrose County.

## *History of the Colorado Wine Industry*

Explore the history of wine making in Colorado with the instructor hired at Western Colorado Community College for the expressed purpose of teaching this subject. The Colorado wine industry has been in existence for 40 years, explore the pioneering grape growers and winemakers that built this industry and events along the way that helped build this industry up to current day. (Class limit: 45)

Wed 2/23/22, 3:00 PM-4:30 PM

*Western Colorado Community College  
2508 Blichmann Avenue  
Building A, Youngblood Room 138  
Grand Junction, CO 81505*

*Instructor will use her own classroom at WCCC.*

Jenne Baldwin-Eaton



Baldwin-Eaton is the 1st instructor at WCCC in Viticulture and Enology.

## *House Divided: The Civil War Depicted Through Art*

This is a Zoom class presented by the Smithsonian Art Museum. The Civil War tested and consumed the country for more than four years. Explore how this great conflict and subsequent Reconstruction period are depicted through the traditional mediums of painting and sculpture, as well as the then new medium of photography. (Class limit: 30)

Wed 3/2/22, 9:00 AM-10:00 AM

Smithsonian American  
Art Museum

*Zoom*

## *How Artificial Intelligence will shape our future*

Artificial Intelligence (AI) is an area of computer science that emphasizes the creation of intelligent machines that work and react like humans. This class explains and defines AI, discusses its history, current state and usage, and scenarios of its impact on our lives. (Class limit: 40)

Mon 3/7/22, 6:30 PM-8:00 PM

Tom Sawyer

*Koinonia Church - Sanctuary*  
730 25 Road  
Grand Junction, CO 81505



Retired software and  
technology strategist;  
inventor; author.

## *Intermediate Duplicate Bridge with a Life Master*

We will be playing duplicate style INTERMEDIATE bridge with pre-dealt hands. Hands will be reviewed as a group with suggestions on how to improve your bridge skills. Must be familiar with duplicate bridge (Class limit: 12)

Mon 2/21/22, 1:00 PM-3:00 PM  
Mon 2/28/22, 1:00 PM-3:00 PM  
Mon 3/7/22, 1:00 PM-3:00 PM  
Mon 3/14/22, 1:00 PM-3:00 PM

*Unitarian Universalist Downstairs*  
536 Ouray Avenue  
Grand Junction, CO 81501

Sharon Snyder



Bridge enthusiast.

## *John F. Kennedy's Struggle with Chronic Low Back Pain*

Britt will present the course of John F. Kennedy's Orthopedic medical history, with a special focus on his experience of chronic low back pain (CLBP), surgeries and management, by both orthodox and unorthodox medical practitioners. (Class limit: 25)

Thu 2/24/22, 10:00 AM-12:00 PM

*American Lutheran Church  
631 26 1/2 Road  
Grand Junction, CO 81506*

Britt Smith



Britt Smith is a Physical  
Therapist.  
PT, DPT, Ocs, FAAOMPT

## *K-9 Dogs: Learn about the Dogs and their Officers*

Officer Joey Gonzalez will share information about K-9 dogs, where the dogs come from, and the unique way of training them. He will talk about using dogs to track drugs and, of course, perpetrators. He and his dog Merlin will show bite techniques and possibly search tactics if weather permits. (Class limit: 30)

Mon 2/21/22, 2:00 PM-4:00 PM

*First Presbyterian - Fellowship Hall  
3940 27 1/2 Road  
Grand Junction, CO 81506*

Joey Gonzales



Officer Joey is the K-9 Officer  
for the Grand Junction Police  
Department.

## *Larger Than Life – A Look at Higher Magnification Photography*

Learn about the terminology, tools, techniques, and challenges of higher magnification photography – the what, when, where, who, why, and how of it. (Class limit: 30)

Tue 2/15/22, 4:00 PM-5:30 PM

*Eureka! McConnell Science Museum  
1400 North 7th Street  
Grand Junction, CO 81501*

Hank Schoch



Hank Schoch is a retired national park ranger and cabinetmaker and a self-taught photographer.

## *Live Fast, Die Young, and Other Cottonwood Tales*

Cottonwoods are the foundational tree species along rivers in the desert southwest providing a rare source of shade and tall habitat for riparian species. In this talk, you will learn about the ecology of cottonwoods, from the conditions they need to establish and grow (very specific), to how long they live (not very), to the stressors that are affecting our local cottonwoods (fires, lack of floods, non-native plants like tamarisk, and more). (Class limit: 45)

Tue 3/8/22, 5:30 PM-6:30 PM

*Unitarian Universalist Sanctuary  
536 Ouray Avenue  
Grand Junction, CO 81501*

Deborah Kennard



Dr. Kennard has instructed Environmental Science at CMU since 2005 and has done years of research in the Colorado National Monument.



## *Meeker Incident and the White River War*

After years of encroachment on their lands, White River Ute attacked an Indian agency staffed by Agent Nathan Cook Meeker on September 29, 1879. The hostility escalated when cavalry troops under Major Thomas Thornburgh engaged with the Ute at Milk Creek in what became one of the last major Indian War conflicts in U. S. history. The ramifications of these incidents have had long lasting implications that changed the course of Ute and Colorado history. (Class limit: 40)

Tue 3/1/22, 10: 30 AM-12: 30 PM

*Koinonia Church - Sanctuary  
730 25 Road  
Grand Junction, CO 81505*

Peter Booth PhD



Retired museum professional who loves the study of history and culture of diverse peoples.

## *Movies: Mad About Film*

We will show films from several different genres. Films are mainly selected from American Film Institute's 100 greatest American movies of all time. Most films shown are considered "classics" and have earned this designation based on critical analysis and acclaim, not necessarily popularity. The presenter will preview the film and facilitate a brief discussion following the showing. The New Dimensions' film license prohibits publishing or marketing film titles in advance of showing. (Class limit: 60)

Fri 2/11/22, 6: 30 PM-9: 30 PM  
Fri 2/18/22, 6: 30 PM-9: 30 PM  
Fri 2/25/22, 6: 30 PM-9: 30 PM  
Fri 3/4/22, 6: 30 PM-9: 30 PM  
Fri 3/11/22, 6: 30 PM-9: 30 PM  
Fri 3/18/22, 6: 30 PM-9: 30 PM

*Dominguez Hall 111  
1248 Houston Ave  
Colorado Mesa University  
Grand Junction, CO 81501*

Joe Zeni, Ralph  
Wilson, Dick  
Arnold



Movie Enthusiasts

Dick Arnold



Dick is a film enthusiast and tries to explore the genres.

## *Nature Journaling*

Learn how to draw a simple sketch! A great way to explore your inner artist while observing the wonderful landscapes which surround us. A Nature Journal can be anything you want it to be. Nature journaling is about observing what is in front of us and learning how to do a quick sketch to capture the moment, or a feeling. These simple sketches can be done through paintings, diagrams, maps, cartoons or even stick figures. Tap into your imagination and add poetry, prose, labels, lists, personal reflective writing and more to your sketches. No experience required. (Class limit: 12)

Tue 3/1/22, 1:00 PM-3:00 PM  
Tue 3/8/22, 1:00 PM-3:00 PM  
Tue 3/15/22, 1:00 PM-3:00 PM

*First Congregational Church  
1425 North 5th Street  
Grand Junction, CO 81501*

Barbara Miles



Retired attorney sharing her love of Nature Journaling using the right side of her brain

## *Night Crossings: the Iron Curtain (& other historic Border Walls)*

A Historical look at border walls from the 21st Century BC up thru the Iron Curtain. Examine the Socio-political situation during the Iron Curtain and the causes for it's eventual demolition. (Class limit: 45)

Tue 2/8/22, 4:00 PM-5:30 PM

*Unitarian Universalist Sanctuary  
536 Ouray Avenue  
Grand Junction, CO 81501*

Ken Mabery



Ken worked 40+ years for the National Park Service that included international assignments.

## *Opera: Informance on the opera "Ariadne auf Naxos"*

An informance on the Richard Strauss opera "Ariadne auf Naxos" with the intent of maximizing your enjoyment of the live Metropolitan Opera Simulcast which will air on Saturday March 12 at 10: 55am at the Regal Theater. Note: tickets for the live simulcast are typically \$22 for seniors. (Class limit: 40)

Wed 3/9/22, 10: 00 AM-11: 30 AM

*Unitarian Universalist Sanctuary  
536 Ouray Avenue  
Grand Junction, CO 81501*

Ed Arnos



Opera fan and lecturer. He has studied and sung opera and large choral works for 40 years.

## *Overview of Photography: From Cave Images to Modern Times*

Man's desire to capture images for posterity dates back to cavemen leaving drawings on their walls. Innovations in this imagery will be traced up through the first real photographic images to modern times. Alternate techniques that we don't hear about today will be discussed and some of the reasons behind their eventual demise. (Class limit: 45)

Thu 2/24/22, 3: 00 PM-4: 30 PM

*Zoom*

Scott Warren



Scott owned a Tintype photo studio and worked in the Hollywood photo industry.

## *Peach Street Distillery Tour*

Using local grains and fruits, the Peach Street Distillery produces a range of fine spirits. The tour will cover mashing, fermenting, distilling, aging and bottling techniques as well as some company history and Palisade stories.

Samples will not be provided as part of the tour. (Class limit: 20)

Fri 2/11/22, 11:00 AM-12:30 PM

*Peach Street Distillery  
144 South Kluge #2  
Palisade, CO*

Davy Lindig



Davy is Head of Production at Peach Street Distillery

## *Penguin Palooza. From Antarctica to the Equator CANCELLED*

Gwen has been the senior bird keeper at the Oregon Zoo in Portland. She will introduce the variety of Penguins that extend from Antarctica to the Equator. Gwen will discuss some interesting penguin research topics.

Thu 2/10/22, 6:00 PM-8:00 PM

*CANCELED*

Gwen Harris



Wildlife Biologist, former zookeeper with Oregon Zoo's California Condor Breeding Program

## *Politics and the (Changing) State of the English Language*

In this session we will examine the current state of political rhetoric by using language structure and sociolinguistic concepts to explore the shape and substance of contemporary political discourse. We'll start by defining language itself and take a whirlwind tour of basic assumptions about how language works in general and how words take on meaning. We'll then turn to American English in particular and focus on political language and rhetoric. Note: This session does not promote or advocate for a particular political position. It is a close look at how language shapes and is then itself changed by our political discourse. (Class limit: 50)

Tue 2/15/22, 1:00 PM-2:30 PM

*Zoom*

Maureen Neal



Professor of English: CMU (retired), former high school teacher.

## *Power of Glaciers*

Glacier Bay National Park and Preserve has a dynamic glacial history. The area and its people have experienced and observed the tidewater glacier cycle of advance and retreat. Today Glacier Bay is a place of scientific research where scientists conduct studies to understand how glaciers function and what their future may be. Presented by a ranger from Glacier Bay National Park and Preserve (Class limit: 50)

Tue 2/8/22, 10:00 AM-11:30 AM

*Zoom*

Park Ranger

One of the National Park Rangers will lead this class.

## *Prehistoric Living Spaces of Western Colorado*

Learn about a number of prehistoric sites in Mesa County and Montrose County that contain material remains that prove human habitation and activities going back at least 1000 years. (Class limit: 38)

Wed 3/9/22, 2:00 PM-3:00 PM

*Community Room at the Central Library  
443 North 6th Street  
Grand Junction, CO 81501*

Ike Rakiecki



Ike is a librarian who is responsible for the Rashleigh Regional History Room at MCPL.

## *Primer on Plant Identification*

This class will discuss the skills needed for plant identification. We will first cover basic plant identification terminology and then utilize online resources to identify local, native species of plants. This class will prepare you for the spring and summer wildflower season. (Class limit: 40)

Thu 3/10/22, 2:00 PM-3:00 PM

*Koinonia Church - Sanctuary  
730 25 Road  
Grand Junction, CO 81505*

Stephen Stern, Ph.D.



Associate Professor of Biology at CMU who teaches numerous classes.



## *Railroad history of Western Colorado*

The unique history of the Railroads of Western Colorado will be brought to life through photos, stories and maps. Learn about the Grand Valley's railroads from the unique Uintah Railway, to the little discussed Fruit Belt route, to the legendary Rio Grande. (Class limit: 40)

Tue 2/22/22, 5:00 PM-6:30 PM

*Koinonia Church - Sanctuary  
730 25 Road  
Grand Junction, CO 81505*

Matt Darling



Curator of Cross Orchards.  
The Museums of Western  
Colorado's railroad historian.

## *Restoring Critical Habitat in the Age of Invasive Species*

Western rivers and riparian (riverside) lands are renowned for their ecological, recreational, aesthetic, cultural, and vital economic values. They provide essential ecosystem services thanks to their role in maintaining water quality and quantity, as well as plant and wildlife biodiversity.

Unfortunately, many western rivers and associated riparian lands have been severely degraded over the past 150 years by altered flows, development and lowering of the water table, and the introduction of invasive plant species (primarily tamarisk and Russian olive). This degradation has resulted in reduced water quality, altered flow regimes, and impaired ecological systems and habitats.

During this brief discussion, New Dimension students will learn about riparian habitats, system stressors, the impacts of invasive plant species, and what can be done to actively manage these impacts. This is a worthwhile class for anyone interested in the nature of things in our local area. (Class limit: 35)

Thu 3/10/22, 10:00 AM-11:00 AM

*American Lutheran Church  
631 26 1/2 Road  
Grand Junction, CO 81506*

Cara Kukuraitis



Outreach Coordinator,  
RiversEdge West

## *Rock Art of the Colorado Plateau*

The American Southwest has been home to many cultures for over 10,000 years and in that vast amount of time, people have changed and adapted to the landscapes and have formed different ways of life. This lecture will discuss from the earliest hunter-gathers to contemporary Native American cultures that have long called the Colorado Plateau home by looking at the different styles and ways that each group left behind images on stone. (Class limit: 50)

Fri 2/11/22, 1: 30 PM-3: 30 PM

*Unitarian Universalist Sanctuary  
536 Ouray Avenue  
Grand Junction, CO 81501*

Zebulon Miracle



Zebulon Miracle is a western Colorado native, historian, and is currently the Executive Director of United Way of Mesa County.

## *Safe at Home*

Learn how to make your home less attractive to criminals and thus more secure. Learn about easy-to-implement techniques and more advanced security measures - yet relatively inexpensive - for your home. (Class limit: 50)

Wed 2/16/22, 6: 30 PM-8: 00 PM

*Unitarian Universalist Sanctuary  
536 Ouray Avenue  
Grand Junction, CO 81501*

Jim Jackson



Jim has been involved in anti-crime for 30 years, 23 of which were with the National Park

## *Science Behind the Exhibits - EUREKA! McConnell Science Museum*

Come learn about the history of EUREKA! McConnell Science Museum and then enjoy spending time exploring the museum and learning about the science behind the hands-on interactive exhibits.  
(Class limit: 25)

Mon 3/7/22, 1:00 PM-2:30 PM

*Eureka! McConnell Science Museum  
1400 North 7th Street  
Grand Junction, CO 81501*

Briana Board



Program Director for Eureka!  
Science Museum

## *Self Care for Seniors*

Self-care is any activity that we do deliberately in order to take care of our mental, emotional, and physical health. Although it's a simple concept in theory, it's something we very often overlook. Good self-care is key to improved mood and reduced anxiety. It's also key to a good relationship with oneself and others. Knowing what self-care is not might be even more important. It is not something that we force ourselves to do, or something we don't enjoy doing. As Agnes Wainman explained, self-care is "something that refuels us, rather than takes from us." Self-care isn't a selfish act either. It is not only about considering our needs; it is rather about knowing what we need to do in order to take care of ourselves, being subsequently, able to take care of others as well. That is, if I don't take enough care of myself, I won't be in the place to give to my loved ones either. In this class you will learn what self-care is and how you can be a good steward of your care.  
(Class limit: 40)

Thu 2/17/22, 6:00 PM-8:00 PM

*First Presbyterian - Fellowship Hall  
3940 27 1/2 Road  
Grand Junction, CO 81506*

Lynda Carpenter



Holistic Nutrition and  
Drugfree Practitioner

## *Teller Indian School in Grand Junction Colorado c. 1886-1911*

The Federal Indian Residential Boarding School System was designed to assimilate Native American children to dominant the Euro-American society. Two schools were established in Colorado in the late 19th century including two in Colorado--at Fort Lewis in Hesperus and in Grand Junction. The cultural memories of these two campuses could not be more different. Fort Lewis's History is well-known and honored on the present day campus in Durango, while the Grand Junction School is all but forgotten among the residents of western Colorado. This includes Grand Junction's now "lost cemetery of Native children who died while attending the school. Archival documents show the School was an important part of federal education efforts. Why then was it summarily forgotten after its closure? Why is it's memory in even more jeopardy today? (Class limit: 80)

Wed 3/2/22, 2:00 PM-4:00 PM

*Grand Valley Event Center  
2400 Consistory Ct  
Grand Junction, CO 81501  
From 1st St. between Patterson and Orchard, turn east on Bookcliff Ave. and follow the curve to the end of the road.*

John Seebach



John Seebach is the Assistant Professor of Archaeology at CMU.

## *The Club Ranch: One Of Western Colorado 's Earliest and Most Well-Known Ranching Operations*

Located at the future mining town of Uravan the Club Ranch was a large ranching operation that became well-known across Western Colorado. This presentation will explore the ranch's origins and history. (Class limit: 30)

Wed 2/16/22, 2:00 PM-3:00 PM

*Community Room at the Central Library  
443 North 6th Street  
Grand Junction, CO 81501*

Ike Rakiecki



Ike is a librarian who is responsible for the Rashleigh Regional History Room at MCPL.

## *The Second Amendment--A History of Gun Rights*

The Second Amendment has a lengthy and sometimes misinterpreted history. Gun control vs gun rights has been a topic of discussion since the founding of the Republic. This course will look at the history of gun rights in the United States and the current case pending before the Supreme Court on New York's discretionary gun permit law which requires an applicant demonstrate "proper cause" to carry a weapon for self-defense purposes. (Class limit: 50)

Fri 2/25/22, 10:00 AM-11:30 AM

*Unitarian Universalist Sanctuary  
536 Ouray Avenue  
Grand Junction, CO 81501*

Glenn Whitaker



Retired trial attorney with 44 years of experience including many constitutional issues.

## *U.S. Supreme Court--Impartial Umpire or Political Entity*

This course will look at the history of the U.S. Supreme Court and how politics have influenced its decisions, including a look at the current Court and the decisions which have made many members of the public believe that the Court is more political than ever. (Class limit: 35)

Tue 2/22/22, 10:00 AM-11:30 AM

*Eureka! McConnell Science Museum  
1400 North 7th Street  
Grand Junction, CO 81501*

Glenn Whitaker



Retired trial attorney with 44 years of experience including many constitutional issues.

## *Vinyasa Flow Yoga*

An invigorating class that will strengthen your body, focus your mind, and empower your spirit. Vinyasa Yoga is designed to cultivate mindfulness, integrate breath and movement, and help you achieve balance for the body and mind that will leave you feeling energized, yet calm and centered. All levels welcome. Participants need to bring Yoga strap, block, and mat. (Class limit: 15)

Wed 2/16/22, 9:00 AM-10:00 AM  
Wed 2/23/22, 9:00 AM-10:00 AM  
Wed 3/2/22, 9:00 AM-10:00 AM  
Wed 3/9/22, 9:00 AM-10:00 AM

*Institute of Dancing Arts  
2148 Broadway Suite C-4  
Grand Junction, CO 81507*

Maggie Bruehlman



Maggie is a certified yoga instructor with over 20 years of experience.

## *Walking Meditation*

Walking Meditation can be a weekly meditative approach using a moderate to easy exercise activity. It helps with clearing and focusing the mind, stress reduction, increase of energy, and a start in controlling invasive thinking. It is a form of "centering" which is an ancient technique teaching you to focus on "here and now", and taking power away from outside concerns and negative thoughts. The hiking trail we will use is mostly flat but has rocks and is uneven. Good tennis or hiking shoes are recommended. (Class limit: 12)

Fri 3/18/22, 11:00 AM-12:30 PM

*Riggs Hill parking lot. Riggs Hill is about one mile southwest of the traffic circle intersection of Broadway and Redlands Parkway. After you go southwest from the circle, Redlands Parkway will turn into South Broadway and the parking lot is off of South Broadway.*

Steve Clark



Degree in geology, docent at Dinosaur Journey, mental health therapist, retired teacher. Has studied meditation/walking meditation.



## *Western Colorado Community College Tour*

Tour the campus of Western Colorado Community College and learn about their innovative programs and classes. (Class limit: 30)

Thu 2/24/22, 2: 00 PM-3: 30 PM

*Western Colorado Community College  
2508 Blichmann Avenue  
Grand Junction, CO 81505  
Meet in Building B -- the building with the kitchens by the Student Services  
Offices*

Kelly Reuss



Director of Student Services  
at Western Colorado  
Community College.

## *What Our CSU Extension Agent Would Like Us to Know*

Susan will review the helpful services for Mesa County residents offered by the CSU Extension Service. She will review topics in horticulture and best practices for home owners, including the choosing, planting, and care of trees; xeriscaping and water usage; and insects to encourage and avoid. This class will be especially helpful for new residents, but also for those of us needing an update on how to keep our yards and gardens healthy in the current conditions we face in Mesa County. (Class limit: 50)

Mon 2/7/22, 10: 00 AM-11: 30 AM

*Community Building at the Mesa County Fairgrounds  
2775 US-50  
Grand Junction, CO 81501*

*(Detailed directions to follow)*

Susan Carter



Susan Carter is the Tri-River  
Area Horticulture and Natural  
Resource Agent.

## *Xinjiang: History, Culture, and Current Political Climate*

Xinjiang is one of the Autonomous Regions of China. Mike will discuss the people, culture, and current political state of the region. (Class limit: 35)

Wed 2/16/22, 11:00 AM-12:00 PM

*Zoom*

Michael Krautkraemer



Michael has his Ph.D. in Central Eurasian Studies at Indiana University.