

After Wounded Knee: Twentieth Century American Indian Policy

Most Americans remember the fabled nineteenth century Indian Wars. Less known is the Twentieth century experience of America's indigenous peoples. This short course examines the American government's shifting policies toward American Indians in the Twentieth century from the 1890's until the late twentieth century. (Class limit: 60)

Wed 10/9/24, 10:00 AM-12:00 PM

*Eureka! McConnell Science Museum
1400 North 7th Street
Grand Junction, CO 81501*

For parking, from 7th Street turn east on Kennedy Avenue and park behind the New Life Church across the street from the museum.

Dr. Steven Schulte



Dr. Steven Schulte is Professor Emeritus at Colorado Mesa University where he taught from 1989-2020.

Alcohol Inks - Art Appreciation

This class is an enthusiastic introduction to the art medium of alcohol inks. These free flowing, vibrant colors have a mind of their own, which behave quite differently than the art mediums of oils, pastels, and acrylics. "Watercolors on steroids" is an apt description of this decade's exploding interest in these inks. Learn the pros and cons of a variety of art mediums, watch a demonstration, and experience your own hands-on techniques using art tools to create your own mini works of art on a variety of substrates. No artistic talent or previous experience necessary - honest! (\$10 for materials payable at the beginning of class.)

Class on Tuesday, Oct 8, 2024 (Class limit: 16):

Tue 10/8/24, 9:30 AM-12:00 PM

*Eureka! McConnell Science Museum
1400 North 7th Street
Grand Junction, CO 81501*

For parking, turn east on Kennedy Avenue off of N. 7th Street and park in the parking lot shared with the New Life Church, south across the street from Eureka!

- OR -

Class on Tuesday, Oct 8, 2024 (Class limit: 16):

Tue 10/8/24, 1:00 PM-3:30 PM

*Eureka! McConnell Science Museum
1400 North 7th Street
Grand Junction, CO. 81501*

For parking, turn east on Kennedy Avenue off of N. 7th Street and park in the parking lot shared with the New Life Church, south across the street from Eureka!

Renée Herring



Mixed-media artist, retired Colorado Parks and Wildlife Watchable Wildlife Coordinator.

Almost Made It! Proposed National Parks

Before 1980, almost 360 national park units were proposed that never went beyond the proposal. That is almost as many units as we have today in the National Park Service. This class explores how those proposals came about and what happened to them, how the determination was made to drop the proposal, and what happened to that particular resource. (Class limit: 45)

Wed 10/16/24, 4:30 PM-6:00 PM

*Unitarian Universalist Sanctuary
536 Ouray Avenue
Grand Junction, CO 81501*

Ken Mabery



Ken worked 40+ years for the National Park Service that included international assignments.

An Introduction to NATO and the US European Command

In light of the unprovoked full scale invasion of Ukraine by Russian forces, this lecture serves as a primer on NATO, US European Command, and the collective defense of Europe. After 10 years of out-of-area missions for the Alliance supporting the US led Global War on Terror, the strategic environment drastically changed with Russia's 2014 annex of the Crimean Peninsula requiring a better understanding of European security on the continent. Following completion of this discussion participants will understand NATO/SHAPE staff organization and how US European Command provides US capabilities and planning to the collective defense of Europe. (Class limit: 50)

Fri 10/18/24, 2:00 PM-3:30 PM

*Koinonia Church - Sanctuary
730 25 Road
Grand Junction, CO 81505*

Mathew Miller



Colonel Mathew P. Miller is a Battle Watch Captain in the ECJ3 Division of the US European Command.

Anatomy of a Thunderstorm and Other Fun Facts

A thunderstorm is a demonstration of nature's energy that we have all experienced. This class will cover the life cycle of a thunderstorm, answering questions like what conditions cause a thunderstorm to form, strengthen, or weaken? What goes on inside the storm? What creates the electrical potential that results in lightning and what conditions form hail and how does that hail grow in size? And for your safety, what are the hazards associated with thunderstorms? (Class limit: 50)

Fri 10/11/24, 10:30 AM-12:00 PM

*Unitarian Universalist Sanctuary
536 Ouray Avenue
Grand Junction, CO 81501*

Jeffrey Colton



Jeff is a Warning
Coordination/Incident
Meteorologist for the National
Weather Service

Art on the Corner Walking Tour

Join Sarah Dishong, Project Coordinator of Downtown Grand Junction, on an educational walking tour of Downtown's art & mural collection along Main Street. You will also spend time learning about the temporary and permanent collection and artists as well as a bit of local history. This class includes two sessions starting at different parts of Main Street so more amazing art can be seen.

Downtown Ambassadors are Erin Donohue & Tracy Wolfe. (Class limit: 15)

Thu 10/10/24, 1:30 PM-3:30 PM

*Meet at the corner of 7th and Main at the Avalon Theater.
645 Main Street
Grand Junction, CO 81501*

Thu 10/17/24, 1:30 PM-3:30 PM

*Meet at the Chrome Buffalo.
359 Main Street
Grand Junction, CO 81501*

Sarah Dishong



Sarah Dishong is the Project Coordinator for Downtown Grand Junction.

Downtown GJ
Ambassadors

Beginning American Mah Jongg

Learn the basics of American Mah Jongg using the National Mah Jongg League card of possible hands. By the end of the sessions you will be playing Mah Jongg. Participants will be expected to purchase the 2024 card of Mah Jongg hands for \$14.00 payable at the first class. We need to have tables of four so be sure you can attend all four classes. (Class limit: 16)

Tue 10/15/24, 9:00 AM-11:00 AM
Tue 10/22/24, 9:00 AM-11:00 AM
Tue 10/29/24, 9:00 AM-11:00 AM
Tue 11/5/24, 9:00 AM-11:00 AM

*First Congregational - Gathering Space
1425 N 5th St
Grand Junction, CO 81501*

Kim Sutherland



Kim is an experienced player and instructor of Mah Jongg.

Beginning/Refresher Zoom Class

This class is for members who have registered for a class offered on Zoom who are unfamiliar with Zoom or want a review of the Zoom features used in New Dimensions classes. Functions like raising hands, participating in chat, how to mute and unmute yourself, and ways to customize your view, will be covered. Zoom can be used on a computer, tablet, or smartphone. (Class limit: 15)

Mon 9/30/24, 9:00 AM-10:00 AM

Zoom

Dave Karisny



Tech Support for New Dimensions.

Birding: Early Fall Migrants

This class will travel to various birding sites and hotspots searching for migrating birds that pass through the Grand Valley on their way south. Participants must provide their own binoculars and be able to walk 1-2 miles on uneven trails. (Class limit: 10)

Tue 10/1/24, 8:00 AM-12:00 PM
Tue 10/8/24, 8:00 AM-12:00 PM
Tue 10/15/24, 8:00 AM-12:00 PM

Location will be emailed to participants Mondays before class meeting; locations are determined by where birds have most currently been sighted.

Mike Henwood



Colorado Ornithologist and avid birder.

Kathleen McGinley



Avid birder, assists with Grand Valley Audubon field trips.

Birds of Capitol Reef National Park

Birds are everywhere! In every imaginable habitat, in the country, in cities, and all seven continents. Wherever you may go, there are birds, even in the desert. Capitol Reef National Park is home to 239 bird species. All over the world, wherever birds are, they have adapted to their environment and have strategies for survival. This program explores some of the adaptations and behaviors birds at Capitol Reef use to make a home in the park. (Class limit: 65)

Mon 10/21/24, 1:00 PM-2:00 PM

Zoom

Shauna Cotrell



Shauna has worked at Capitol Reef for six years and is the Visitor Services Program Manager

Calling All Language Nerds: How Punctuation Works

In this discussion-based course, we'll take an in-depth look at what many consider a nerdy, finicky, fussy, rules-obsessed topic: the history, conventions, and purpose of punctuation in English. Our wide-ranging exploration will address how (and why) different types of punctuation entered the language; how punctuation usage has evolved and changed over time; and how punctuation is used to make written English reflect and represent spoken English. (Class limit: 25)

Mon 10/21/24, 6:30 PM-8:00 PM
Mon 10/28/24, 6:30 PM-8:00 PM
Mon 11/4/24, 6:30 PM-8:00 PM
Mon 11/11/24, 6:30 PM-8:00 PM

*Eureka! McConnell Science Museum
1400 North 7th Street
Grand Junction, CO 81501*

For parking, from 7th Street turn east on Kennedy Avenue and park behind the New Life Church across the street from the museum.

Maureen Neal



Professor of English: CMU (retired), former high school teacher.

Celtic Year in Music and Song: The Rambling Pitchfork

In centuries past, farmers all over the British Isles identified eight special days of the year, the four "Quarter Days," and the four "Cross-Quarter Days" that were, and still are, important annual milestones for agriculture. All of these days have their own unique traditions as well as tunes and songs to celebrate them. Join Fifth Reel and Friends and explore the origins, lore, and music of Beltane, Midsummer's Eve, Lammass Day, Samhain, and more.

Musicians include: Ron Young, Connie Michael, Norm Ashley, John Philips, David Bumgarner, Lindsey Olish.

Class on Wednesday, Oct 30, 2024 (Class limit: 50):

Wed 10/30/24, 3:00 PM-4:00 PM

*Koinonia Church - Sanctuary
730 25 Road
Grand Junction, CO 81505*

- OR -

Class on Wednesday, Oct 30, 2024 (Class limit: 50):

Wed 10/30/24, 3:00 PM-4:00 PM

Zoom

Fifth Reel and Friends



Local Musicians

Center for Independence: Huh! "Say what?" Navigating Life with Hearing Loss

The class will provide an overview of different types and levels of hearing loss, how untreated hearing loss can affect general health, along with tips, tricks & tools to help cope with hearing loss. The class will discuss resources for hearing loss and deafness in our community, such as hearing aids, and the Hearing Loss Association of America (HLAA). Also included in the class will be information on hearing aids, plus displays/demonstrations of assistive technology and useful apps for hearing loss and deafness.

Joining JoAnn in teaching the class will be Denice Roberts who is a CFI Executive Assistant with many years of experience working with people who have hearing loss and Vicki Johnson who is a CFI Administrative Assistant with experience with hearing loss in children. (Class limit: 25)

Fri 11/15/24, 10:00 AM-12:00 PM

*Center for Independence
740 Gunnison Ave.
Grand Junction, CO*

Joanne Stamp



Joanne is the CFI Low Vision & Senior Programs Manager.

Changing Role in Law Enforcement: A Mental Health Emphasis

Division Chief Henry Stoffel will present the changing role of law enforcement and how the Mesa County Sheriff's Office is working more effectively with people who have mental health conditions. He will review the history of law enforcement's traditional responses to these situations involving mental health issues, and the ways these have failed. He will also discuss the steps the Sheriff's Office is taking now to train and educate officers and to partner with community stakeholders, agencies and families, to connect people with needed resources. (Class limit: 50)

Thu 11/7/24, 1:00 PM-3:00 PM

*Mesa County Sheriff's Department Training Room
215 Rice Street
Grand Junction, CO 81501*

Henry Stoffel



Investigations Sergeant at
Mesa County Sheriff's Office

City Recycling Division Tour

The City of Grand Junction started dual stream recycle pickup, one stream including paper, cardboard and fiber board, the other aluminum and tin/steel cans and plastics. Drop off at the recycle center accepts those materials as five streams. During this tour, you will learn how these streams are separated into marketable recycle streams. Find out what people can do to improve the quality of recycled materials and what causes problems with the separation process and recycle quality.

Class on Friday, Nov 1, 2024 (Class limit: 20):

Fri 11/1/24, 10:00 AM-12:00 PM

*City of Grand Junction Recycling Division
333 West Avenue
Building G
Grand Junction, CO 81501*

Parking instructions will be sent to participants.

- OR -

Class on Friday, Nov 8, 2024 (Class limit: 20):

Fri 11/8/24, 10:00 AM-12:00 PM

*City of Grand Junction Recycling Division
333 West Avenue
Building G
Grand Junction, CO 81501*

Parking instructions will be sent to participants.

Angela French



Angela French is Waste Reduction Coordinator for the City of Grand Junction

Collage - Beginning

This class will be two 90-minute sessions. It will include a short review of the history of collage, including Picasso's first use. It will also include a review of the elements of art in collage and the principles of design. Additionally students will make 2 collages of their own.

Students will need to bring their own glue stick (UHU or Elmer's), a good pair of sharp scissors, a magazine or catalog (if you have), and a \$10 supply fee. (Class limit: 12)

Mon 10/7/24, 9:30 AM-11:00 AM
Tue 10/15/24, 9:30 AM-11:00 AM

*Eureka! McConnell Science Museum
1400 North 7th Street
Grand Junction, CO 81501*

For parking, from 7th Street turn east on Kennedy Avenue and park behind the New Life Church across the street from the museum.

Deborah Robinson



Deborah Robinson is a local mixed media artist specializing in collage art work.

Conflict and Conversation

We will define and discuss conflict and cooperation, various conflict resolution options, and identify issues underlying conflicts. We will discuss and apply concepts and communication techniques to conflict examples. We will especially focus on political conversations, given current public interest. Participants will be encouraged to bring other examples of conflicts to subsequent classes, for application of the conflict options. Limited role-playing opportunities will be offered to practice and apply skills/techniques in the context of the participants' examples. (Class limit: 35)

Mon 10/28/24, 4:30 PM-6:00 PM
Mon 11/4/24, 4:30 PM-6:00 PM
Mon 11/11/24, 4:30 PM-6:00 PM

*Eureka! McConnell Science Museum
1400 North 7th Street Green Room
Grand Junction, CO 81501*

For parking, from 7th Street turn east on Kennedy Avenue and park behind the New Life Church across the street from the museum.

Dee Wernette



Dee taught a sociology of conflict course at the university level for 25+ years.

Creative Writing & Reality – Fact or Fiction?

The class will examine the novel as a creative means to both entertain and educate readers and authors. What is a novel? It will briefly trace the novel's history, from its early beginnings, to today's contemporary authors. The presentation will include examples of popular writers; their imaginative tales that entertain, and in-depth research that subtly educates. The presenter will discuss: what led him to become a novelist, where his plot ideas come from, how the characters are chosen and developed, and in what way historical events and individuals are incorporated to provide an element of reality. The class will explain why the disclaimer on the copyright page is important. Tips for individuals with limited sight will be offered. Audience participation is encouraged. (Class limit: 35)

Thu 11/7/24, 1:00 PM-2:30 PM

*Eureka! McConnell Science Museum
1400 North 7th Street
Grand Junction, CO 81501*

For parking, from 7th Street turn east on Kennedy Avenue and park behind the New Life Church across the street from the museum.

Deane Drury



Published Author

Cribbage for Beginners

Cribbage is one of the best two-handed card games, and one of the most enduring. The game has been entertaining players as far back as the 17th century. It involves playing and grouping cards in combinations which gain points, using a cribbage board for score-keeping, and learning the unique scoring system. It is recommended that you have a knowledge of cards prior to this class. This class will teach you the basics or refresh your knowledge to be able to enjoy one of the best card game pastimes. (Class limit: 10)

Mon 10/14/24, 2:00 PM-4:00 PM
Mon 10/21/24, 2:00 PM-4:00 PM
Mon 10/28/24, 2:00 PM-4:00 PM
Mon 11/4/24, 2:00 PM-4:00 PM

*First Congregational - Library
1425 N 5th Street
Grand Junction, CO 81501*

Tony Hober



Member of the American Cribbage Congress who loves to share and teach this fun game.

Crime Fiction: Unexpected Mentors

As some of our favorite crime fiction authors have aged, so too have their detectives. One of the interesting outcomes is that we are able to read about sleuths who have the same challenges we do as we age: physical decline, accessing medical care, feelings about mortality, changes in family and social structures, anxieties about mental health, how to maintain vibrancy, etc. Well-written stories featuring senior sleuths are engaging, but is it possible that we can learn something from these detectives not only about how to solve a crime, but how to deal with some of our own issues? That's what we'll discuss in the class. And fortunately, most of these aging sleuths not only deal head-on with the problems but also manage to find some benefits and humor in the aging process.

Participants will be asked to read one contemporary crime fiction novel (title/author will be provided as soon as instructor has a class list), but we will also consider other examples of both classic and contemporary senior sleuths. (Class limit: 15)

Wed 10/23/24, 9:30 AM-11:30 AM

First Congregational - Chapel
1425 N 5th St
Grand Junction, CO 81501

Lyn Fraser



Lyn has taught at Texas A&M University and Colorado Mesa University.

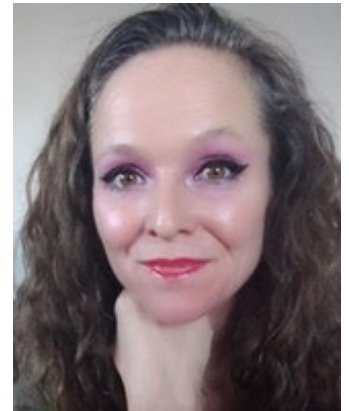
Crisis and Confidence: Navigating a Charged Atmosphere with Dorothee Solle

This six-week class will focus on writings by the German Lutheran Liberation Scholar and Theologian Dorothee Sölle (1929-2003). In six essays taken from her text "The Window of Vulnerability", she teaches her readers how to listen and dialogue into a charged socio-religio-political context. Sölle offers a new way to speak, a rejuvenated way to think, a firmer ground to stand on, and a compassionate way to be in the world, even when things feel out of control. This class is designed to replace fear and insecurity with confidence of faith, confidence in action, and confidence in possibility. (Class limit: 25)

Wed 10/9/24, 1:00 PM-2:30 PM
Wed 10/16/24, 1:00 PM-2:30 PM
Wed 10/23/24, 1:00 PM-2:30 PM
Wed 10/30/24, 1:00 PM-2:30 PM
Wed 11/6/24, 1:00 PM-2:30 PM
Wed 11/13/24, 1:00 PM-2:30 PM

Koinonia Church - Sanctuary
730 25 Road
Grand Junction, CO 81505

The Rev. Dr. Lauren RE
Larkin



The Rev. Dr. Lauren RE
Larkin is the Rector of the
Episcopal Church of the
Nativity.

Cutting Edge Landscaping

Gardening and landscaping is evolving! The idea of xeriscape will go on trial: what is it and where must it be improved? What is the difference between a landscape and a garden? Can you really have a landscape without irrigation at all? Why would anyone but a plant nerd or gardener care anyway? This class will cover some of the most useful concepts and information for innovative, ecological, low-maintenance, low- (or no-) irrigation outdoor spaces for the American West. We'll talk realities and feasibility, with real-life local examples, of landscapes like pollinator meadows, xeriscapes, and crevice gardens. (Class limit: 45)

Wed 11/6/24, 10:00 AM-12:00 PM

*First Presbyterian - Fellowship Hall
3940 27 1/2 Road
Grand Junction, CO 81506*

Kenton Seth



Kenton Seth is a western Colorado native, garden writer, seed hunter, and garden designer.

Distinguishing Opinion from Reporting: How to Exit this Wilderness

A panel comprised of current and former professional journalists from The Daily Sentinel will discuss the blurring of lines between hard reporting and opinion writing. For example, is it okay to simply state that the 2020 election was not rigged or must a responsible journalist demonstrate through reporting that it was not?

Class on Friday, Oct 18, 2024 (Class limit: 50):

Fri 10/18/24, 10:00 AM-12:00 PM

*Koinonia Church - Sanctuary
730 25 Road
Grand Junction, CO 81505*

- OR -

Class on Friday, Oct 18, 2024 (Class limit: 20):

Fri 10/18/24, 10:00 AM-12:00 PM

Zoom

Jay Seaton



Jay Seaton is the publisher of The Daily Sentinel, former trial lawyer and advocate for healthy local journalism.

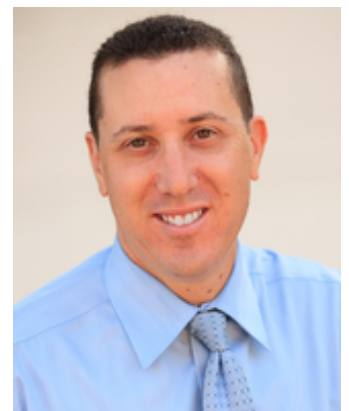
District Attorney: A Look inside the Office

The District Attorney will review his role in our community, major cases being handled, current challenges, and crime trends in Mesa County. He will also discuss his role with many of the social services in Mesa County. (Class limit: 50)

Thu 10/17/24, 10:00 AM-12:00 PM

*Unitarian Universalist Sanctuary
536 Ouray Avenue
Grand Junction, CO 81501*

Dan Rubinstein



Elected District Attorney for the 21st Judicial District.

Dyslexia: Why Some Smart People Struggle to Read

This course will be a 90-minute Power Point presentation including time for questions, both during and after the presentation. The topics will include a description of dyslexia; the historical roots of the recognition of dyslexia; the connection between speech and reading; the neurological causes of dyslexia; and the current treatment of dyslexia. (Class limit: 30)

Mon 11/4/24, 10:00 AM-11:30 AM

*Eureka! McConnell Science Museum
1400 North 7th Street
Grand Junction, CO 81501*

For parking, from 7th Street turn east on Kennedy Avenue and park behind the New Life Church across the street from the museum.

Dale Gates, PH.D.



Dale received a Ph.D. from U.C., Berkeley, in Reading and Language Development.

Easy Hike in State Wildlife Viewing Area

Have you been to the junction of the Colorado and Gunnison Rivers? At 9:00 a.m., join me for an easy walk to view the area where the rivers join. Along the way, we will walk among the largest collection of cottonwood trees I have seen. If fortunate, we will see wildlife. Nevertheless, you will learn about this treasured place in our backyard. There is no elevation gain nor boulders to trip over. We will travel 1 1/2 to 2 miles and return about 11:00 a.m. (Class limit: 15)

Mon 10/14/24, 9:00 AM-11:00 AM

Michael Wallace

- 1. From the light near Safeway on Broadway in the Redlands, turn left onto Monument Road*
- 2. Continue on Monument Road for 0.2 miles*
- 3. Turn left onto D Road and continue for 0.3 miles*
- 4. Turn right onto Rosevale Road and continue for 0.5 miles*
- 5. Turn left onto C1/2 Road and continue for 0.2 miles passing a sign on the left reading Grand Junction Wildlife Area*
- 6. C1/2 Road turns right and becomes 25 3/4 Road and continue for 0.2 miles*
- 7. Turn left onto Parking Area with a turquoise-colored restroom and covered information board. There is designated parking for only 12 vehicles, so park tight in case 15 vehicles show up!*



Passionate to discover whatever is around the next bend in the trail and over that hill.

Elements of a Healthy Couple

Have you ever looked at other couples and admired how they communicated or how they interacted with each other? Have you ever wished your relationship with your partner were different or better? We will look at the 9 tasks of a healthy couple with discussions of each task and links to books and articles. (Class limit: 12)

Thu 10/3/24, 7:00 PM-8:30 PM
Thu 10/10/24, 7:00 PM-8:30 PM
Thu 10/17/24, 7:00 PM-8:30 PM
Thu 10/24/24, 7:00 PM-8:30 PM

First Congregational - Chapel
1425 North 5th Street
Grand Junction, CO 81501

Steven Landman



Licensed Social Worker and
Counselor

Emergence of Anglo-Saxons and Their History

Who Were the Anglo-Saxons? Many of us talk about the Anglo-Saxons, but who were they really? According to Wikipedia the Anglo-Saxons, the English or Saxons of Britain, were a cultural group who spoke Old English and inhabited much of what is now England and south-eastern Scotland in the Early Middle Ages. They traced their origins to Germanic settlers who became one of the most important cultural groups in Britain by the 5th century.

However, on a trip to Romania we discovered that Romania had a significant Saxon (German) heritage in Southern Transylvania, home to 259 Saxon towns and villages. Saxons came to Transylvania during the mid 1100s from the Rhine and Moselle Rivers regions. Highly respected for their skill and talent the Saxons succeeded in gaining administrative autonomy, almost unmatched in the entire feudal Europe of absolute monarchies. The result of almost nine centuries of existence of the Saxon (German) community in Southern Transylvania is a cultural and architectural heritage, unique in Europe. Come discover why and how the Saxons built the region "Siebenbuerger" (seven walled citadels in German) and the fantastic legacy they left in Romania. (Class limit: 50)

Tue 11/12/24, 4:00 PM-5:30 PM

*Unitarian Universalist Sanctuary
536 Ouray Avenue
Grand Junction, CO 81501*

Barb Bowman



Barb Bowman is a Stewardship Contractor for the Colorado Tourism Office.

Engage Your Brain

By challenging your brain to learn new and novel tasks, you activate underused pathways and connections. The games you will learn to play during this two-session, two-hour class will encourage a fit and flexible mind. And, most importantly, the class will be fun. Participants are expected to attend both sessions.

Class starting on Wednesday, Oct 2, 2024

(Class limit: 12):

Wed 10/2/24, 10:00 AM-12:00 PM

Thu 10/3/24, 10:00 AM-12:00 PM

*Redlands United Methodist - Fellowship Hall
527 Village Way
Grand Junction, CO 81507*

- OR -

Class starting on Wednesday, Oct 9, 2024

(Class limit: 12):

Wed 10/9/24, 10:00 AM-12:00 PM

Thu 10/10/24, 10:00 AM-12:00 PM

*Redlands United Methodist - Fellowship Hall
527 Village Way
Grand Junction, CO 81507*

Victoria Johnson



Vicki is a retired mental health counselor.

Everything You Wanted to Know About Classified Information But Were Afraid Of Going To Jail For Asking

This course will review the definition and various categories of classified information. We will explore the current history of prosecutions and civil actions involving the disclosure and improper use of classified information, including the methods of safeguarding the information in court. Several case histories will be discussed including the instructor's personal experience in suing CIA officials who ignored their obligations to protect classified information by obtaining pre-publication review of their writings. (Class limit: 50)

Wed 10/30/24, 10:00 AM-11:30 AM

*Koinonia Church - Sanctuary
730 25 Road
Grand Junction, CO 81505*

Glenn Whitaker



Retired trial attorney with 44 years of experience including many constitutional issues.

Exploring the Southwest: The Coronado Expedition of 1540

This program is presented by Southeast Arizona National Parks. It will discuss the Coronado Expedition of 1540-1542, which was the first major Spanish exploration of the American Southwest. It begins with a look at the life and times of Francisco Vasquez de Coronado, the leader of the expedition. It will also discuss the logistics and route they took and end with a look at the effects of the Colombian Exchange on our lives today. (Class limit: 50)

Fri 10/25/24, 9:30 AM-11:00 AM

ZOOM

Darian Qureshi



Park Guide at Coronado
National Memorial

Fall & Winter Yard Care in Western Colorado

Topics for this class include preparing lawns, flowerbeds, and vegetable gardens for changing seasons; fertilization and pruning strategies; and the importance of winter water for landscape plants in our arid location. (Class limit: 25)

Wed 10/16/24, 10:00 AM-12:00 PM

*Bookcliff Gardens
755 26 Road
Grand Junction, CO 81506*

Mona Dyer



Mona is a 20-year veteran in
the nursery industry.

Melissa Turner

Melissa completed "Green School" with CSU earning the Colorado Gardener certification.

Field Trip to the Fall Bird Banding Station

The epic journey of bird migrations is one of the most remarkable phenomenon in our natural world. Each fall, here in Connected Lakes State Park, a bird banding station, (one of thousands around the world) is set up to capture, band, and release migratory songbirds that pass through the Grand Valley. Much of what we know about migration comes from the tiny aluminum anklets banded birds wear on their travels. You will witness migration in a new way with a visit to the bird banding station. We will be up close to these wild birds as a bird biologist takes us through the process of capture, banding and release, and how bird banding aids in deep scientific research and bird conservation. You might even have the opportunity to hold and release one...it's magical. (Class limit: 25)

Fri 10/11/24, 8:00 AM-10:00 AM

*Connected Lakes State Park
Parking instructions will be sent to class participants.*

Cary Atwood



Retired teacher, park ranger, naturalist, birder, and outdoor enthusiast who enjoys lifelong learning in the great outdoors.

First Friday Tour of Local Art Galleries

Meet us Downtown for a First Friday Gallery Tour. The tour stops include a visit to the Lowell School to check out the galleries located in the historic space. Then we will stop at Confluence Studio before working our way back to Main Street and the other downtown galleries. See what the downtown art scene has to offer and meet the business owners and artists contributing to the scene. This is a casual stroll with no specific time frame.

Downtown GJ Ambassadors are Shawna Bonner, Kylie Bruso & Karl Utsurogi
(Class limit: 12)

Fri 10/4/24, 5:00 PM-7:30 PM

*Begin at the Avalon Theater at 7th and Main
645 Main St
Grand Junction, CO 81501*

Downtown GJ
Ambassadors

Fly an Electric Remote Control Airplane

Ever wanted to try flying a remote control airplane? Here's your chance. This class starts with a 2 hour lecture in the instructor's shop where you will be introduced to the components used in electric RC flying, the basics of plane control, and the rules and regulations for safe flying. The lecture is followed with several flying sessions at the Grand Junction Modeleers flying field where you will be teamed with experienced pilots that, with the help of "buddy-boxes", help you fly an electric RC plane. The instructor will provide the equipment needed. Flying sessions depend on weather, so while the schedule includes flying session dates and times, some may be cancelled due to the weather and other times offered as needed and as weather patterns dictate. Students do not have to attend all the flying sessions offered, just as much as your interest dictates. (Class limit: 8)

Mon 9/30/24, 12: 30 PM-2: 30 PM

Lecture to be held an the instructor's shop/garage in the Redlands. The address will be emailed to those in the class.

Mon 10/7/24, 12: 30 PM-2: 30 PM

Mon 10/14/24, 12: 30 PM-2: 30 PM

*Grand Junction Modeleers Flying Field
3320 Whitewater Hill
Orchard Mesa
Grand Junction, CO 81503*

*Located off 32 Road near Highway 50.
Directions given at the lecture.*

Stan Zygmunt



Stan is a retired Chemical Engineer with experience in energy and environmental compliance.

Follow The Buffalo - Homestead National Historic Park - Nebraska

The Homestead Act of 1862 had far reaching impacts on the United States including western expansion, immigration, and technological innovation. The impacts of the Act also extended to those American Indians who already called the West home. The American bison or "buffalo" was sacred to many American Indian tribes. The animals played an integral part in all aspects of daily life. In this lesson, a park ranger will use real parts of the buffalo to examine the different ways American Indian tribes utilized the sacred animal. (Class limit: 35)

Thu 10/24/24, 9:30 AM-11:00 AM

ZOOM

Rob Briwa



Rob Briwa is the Education Program Specialist at Homestead National Historical Park

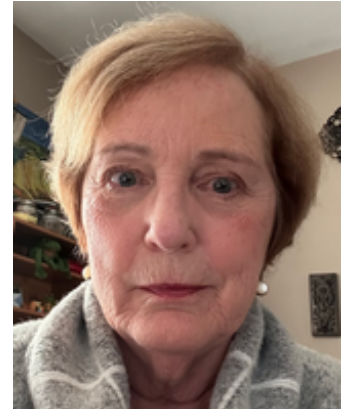
Frank Lloyd Wright: Life & Architecture

Explore the life and architecture of one of the leading American architects of the 20th century. Discover if Frank Lloyd Wright was one of the first green architects using the principles of organic architecture. Follow his life from an early career with Louis Sullivan to becoming the pioneer of Prairie style architecture. (Class limit: 45)

Tue 11/5/24, 2:00 PM-3:00 PM

*Unitarian Universalist Sanctuary
536 Ouray Avenue
Grand Junction, CO 81501*

Sheree Fukai



Retired Civil Engineer

Fraud: Don't be a Victim

The class will focus on fraud and scam trends and ways to prevent becoming a victim! New information will be offered for an updated discussion. (Class limit: 40)

Wed 10/23/24, 10:00 AM-11:30 AM

*Unitarian Universalist Sanctuary
536 Ouray Avenue
Grand Junction, CO 81501*

Kristi Knowles



Member of the Investigations
Unit of the Grand Junction
Police Department.

GONE! Decommissioned National Parks

What happened to 30 National Parks that are no more? Why were they made National Parks only to be decommissioned years later? Can you still visit these areas? Could this amount of delisting occur again, in the future? We will explore the answers to these questions, only you will have to make up your own mind about that last question. Class presentation will be a bit less than 1 hour; the last half hour will be discussion/Q&A. (Class limit: 45)

Thu 10/10/24, 4:30 PM-6:00 PM

*Unitarian Universalist Sanctuary
536 Ouray Avenue
Grand Junction, CO 81501*

Ken Mabery



Ken worked 40+ years for the National Park Service that included international assignments.

Genealogy – You've Taken a DNA Test, What's Next?

Have you been considering taking a DNA test to help with your family history research, but don't know which test is best for you? Have you taken a DNA test, received your results, and are now overwhelmed by all your matches (or the lack of matches)? If any of these sound like you, please join us for an introductory DNA class where we will talk about DNA test companies, basics of learning how to navigate test company websites, and how to sort your matches to help you solve some of your family history mysteries.

To get the most out of the class, attendees should bring an iPad or laptop computer. (Class limit: 12)

Mon 10/7/24, 10:00 AM-11:30 AM
Mon 10/14/24, 10:00 AM-11:30 AM
Mon 10/21/24, 10:00 AM-11:30 AM

*Koinonia Church - Sanctuary
730 25 Road
Grand Junction, CO 81505*

Pam Paxton



Pam was past president and serves as Board Member for the Mesa County Genealogical Society

Global Conversations Focusing on Turmoil Areas: Gaza Through the Eyes of a Physician

Humanitarian and physician, Dr. Barbara Zind, discusses her perspective on the humanitarian situation for civilians since the siege of Gaza in 2007. She arrived on her tenth humanitarian mission to Gaza on October 6, 2023; one day before the war erupted. Due to closed borders, she remained in Gaza until November 1, 2023. Her continued work with Heal Palestine and communications with Gazans offer a unique perspective in this difficult situation. (Class limit: 80)

Thu 10/10/24, 9:00 AM-10:00 AM

*Unitarian Universalist Sanctuary
536 Ouray Avenue
Grand Junction, CO 81501*

Barbara Zind, M.D.



Pediatrician and humanitarian, Dr. Zind, discusses the humanitarian situation in Gaza.

Global Conversations Focusing on Turmoil Areas: Ukraine

Discuss the challenges faced by Ukraine as it defends itself from full-scale invasion by Russia. Examine the significant impacts of the war on the region. Discover how the conflict has influenced regional security and challenged the balance of power in the area. Analyze the strategies employed by Ukraine and the international community to mitigate the effects of the conflict on the region and maintain security in the face of geopolitical upheaval

Class on Tuesday, Oct 22, 2024 (Class limit: 45):

Tue 10/22/24, 4:00 PM-5:00 PM

*Koinonia Church - Sanctuary
730 25 Road
Grand Junction, CO 81505*

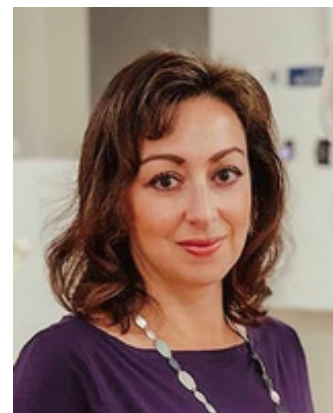
- OR -

Class on Tuesday, Oct 22, 2024 (Class limit: 20):

Tue 10/22/24, 4:00 PM-5:00 PM

Zoom

Olga Grisak



Program coordinator and faculty member at Colorado Mesa University originally from Ukraine.

Growing Healthy Trees - Part II

This class will explore the challenges of growing happy, healthy trees in our desert environment. Topics include site selection, species diversity, planting, care, insects and disease. We'll briefly cover and explain all the basics you should know. It will be an open discussion so bring your questions, successes, and failures. (Class limit: 70)

Thu 11/7/24, 10:00 AM-12:00 PM

*Koinonia Church - Sanctuary
730 25 Road
Grand Junction, CO 81505*

Tom Ziola



Tom is a certified arborist with a passion for trees and loves sharing that passion.

Hike Flume Canyon

This hike is a repeat of a hike offered previously. I am offering it for another time because it had a large waitlist, plus I never tire of visiting this unique place. Flume has it all: easy access in the nearby Black Ridge Canyon Wilderness, narrow passages with an intimate feel, lots of trees and shrubs and interesting geology. Not much elevation change. Consider it moderately strenuous because of an easy scramble up and down. I like to use a hiking pole to keep my balance navigating boulders in the dry stream bed. I wear long pants and a long-sleeve shirt because there are patches of poison ivy. In the Fall, the leaves turn a deep red, so it is easy to spot. Meet at the Pollock Bench trailhead kiosk at 9:00 a.m., and we will explore the Inner Flume. The hike is 3-1/2 miles out and back. Taking it slow, you will return about noon.

When choosing hikes or nature walks, we encourage you to read the course descriptions carefully and be honest when evaluating your capability to participate. Please consider whether: you are adapted to the elevation; you have been hiking or walking regularly; you usually hike or walk a similar distance and on the types of terrain described; you have balance or breathing issues; and you can keep up with a group; etc. Your careful consideration of these factors will ensure that you will be able to complete the hike or walk as described without any serious issues and have a great time. (Class limit: 15)

Fri 10/18/24, 9:00 AM-12:00 AM

Michael Wallace

Drive west on I-70 toward Fruita. Take Exit 19 (Hwy 340) and turn left (south). This is also the road to take for the west entrance to Colorado National Monument. Follow the road for about one mile to Kings View Estates. (Nearly opposite the rodeo area.) A sign is posted for the Horsethief Canyon Wildlife Area. Turn right (west) onto Kings View Road. Within one mile, you will bear right at a fork with a sign indicating Devils Canyon. Continue for two miles. Watch for a sign to the Pollock Bench trailhead located left of the road. The trail to Flume Canyon shares the trailhead with Pollock Bench.



Passionate to discover whatever is around the next bend in the trail and over that hill.

Hiking Rabbit Ears Mesa By the Light Of the Hunter's Moon

This will be a unique hike as we will start hiking at dusk and finish it by moonlight. Rabbit Ears Mesa Trail climbs to the top of a mesa with views stretching from the Bookcliffs and Grand Mesa to the La Sal Mountains. Below us will be the Colorado River and its many canyons. The view is beautiful. We will start the hike so we are at the viewing point at sunset. We will spend about thirty minutes here resting, taking in the view, and having a snack. We will start down during twilight, but use the moon as our guide the last mile or so (headlamps/flashlights should be taken and will be used as needed). This hike is a 6-mile lollipop loop. We will hike a little over half way gaining 700 feet in elevation before we reach the overlook. The developed trail is rated as moderate and is mostly dirt with rock outcroppings. Night hiking is fun and rewarding, but can be challenging. Please consider your comfort level and hiking abilities before joining this hike. (Class limit: 10)

Tue 10/15/24, 3:45 PM-9:00 PM

We will meet at the Trail Through Time parking lot. Turn right after taking the Rabbit Valley Exit (Exit 2 off of I-70, 30 miles west of Grand Junction). Together, we will then drive to the trailhead.

Kevin Hardy



Kevin Hardy is a retired school teacher that spent his summers and many weekends hiking and having fun in the outdoors.

History of the Volcanic Study of Kilauea

Learn about volcanic study of Kilauea in this two part class.

Part 1 will cover the native Hawaiian understanding of the volcano, early observations by missionaries and scientists, and the creation of the United States Geological Survey's Hawaiian Volcano Observatory in 1912.

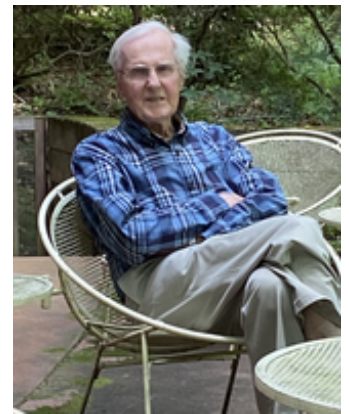
Part 2 covers the modern study of the Kilauea Volcano and how volcanology plays a part using quantitative studies.

Participants are expected to attend both sessions. (Class limit: 25)

Fri 11/8/24, 1:00 PM-2:00 PM
Tue 11/12/24, 1:00 PM-2:00 PM

*Koinonia Church - Sanctuary
730 25 Road
Grand Junction, CO 81505*

Thomas Wright



Thomas Wright spent his entire career with the U.S. Geological Survey with some of that time at the USGS Hawaiian Volcano Observatory.

Hospital Insurance 101: How to Financially Survive a Hospital Stay

Some hospital stays are pre-planned but most are not. What should you know ahead of time, what questions should you ask, and what can you do before a hospital stay to make healing a better experience. Dr. Korrey Klein will address how insurance, pre-authorization, and cash pay impact your time staying in a hospital, along with outlining some expectations, and how to navigate the complicated hell of billing after a hospital stay. (Class limit: 60)

Thu 11/7/24, 3: 30 PM-5: 00 PM

*Koinonia Church - Sanctuary
730 25 Road
Grand Junction, CO 81505*

Korrey Klein, MD



Dr. Klein is President and CEO of Family Health West

Introduction to Tattooing in America

Explore the culture of tattoos and dive into the evolution of tattooing as a modern art form. (Class limit: 45)

Thu 11/14/24, 10: 30 AM-11: 30 AM

*Unitarian Universalist Sanctuary
536 Ouray Avenue
Grand Junction, CO 81501*

Alexa Escalera



Tattoo studio owner and professional Tattoo Artist specializing in Illustrative Tattooing.

Kirsten Foster



Tattoo studio owner, professional Body Piercer, and member of the Association of Professional Piercers.

Investigations into Human Thought and Consciousness

Over time, our human ancestors became fully intelligent beings with the ability to direct consciousness and self-thought and interact with others through multiple languages. The process of humans becoming aware and introspective was poorly understood until the 20th century, when keen insights into the past stages of brain development tied together knowledge about the progress of mankind's cognitive ability. In this lecture, we'll explore how early threads of awareness grew beyond instinct and survival, and advanced to include self-recognition, expanding cognitive abilities, social organization and language development. This survey class will investigate the history and current modes of thought and will also cover new developments toward artificial super intelligence.

Class starting on Tuesday, Oct 15, 2024 (Class limit: 60):

Tue 10/15/24, 4:00 PM-5:30 PM
Thu 10/17/24, 4:00 PM-5:30 PM

*Koinonia Church - Sanctuary
730 25 Road
Grand Junction, CO 81505*

- OR -

Class starting on Tuesday, Oct 15, 2024 (Class limit: 20):

Tue 10/15/24, 4:00 PM-5:30 PM
Thu 10/17/24, 4:00 PM-5:30 PM

Zoom

Scott Perrin



Scott is an amateur cosmologist with graduate level course work in physics and astrophysics.

Investing in Your Energy -- Your 'Real' 401K

This course will present that our energy flow is our real currency. Understanding that predicates easier choices and less struggle in deciding what we eat, what we do, and even what we think. It's never too late to reprioritize our goals and reframe how we can most effectively create our best life chapter! (Class limit: 30)

Tue 11/12/24, 10:00 AM-11:30 AM

*Eureka! McConnell Science Museum
1400 North 7th Street
Grand Junction, CO 81501*

For parking, from 7th Street turn east on Kennedy Avenue and park behind the New Life Church across the street from the museum.

Paula Anderson



Paula is a Certified Health and Wellness Coach who has written numerous columns locally on the challenges of behavior change.

John Otto: Boostingly Yours--A Chautauqua Presentation

In 1906, itinerant trail builder and dynamite expert, John Otto, saw the rimrock country south of Grand Junction for the first time, an event that forever changed his life. The deep canyons and sandstone cliffs spoke to his ideas about patriotism, religion, and love, as well as the nation's future. He dedicated his life to protecting, celebrating, and promoting what he envisioned as a natural paradise. Otto's manic boosterism culminated in the establishment of the Colorado National Monument. (Class limit: 50)

Tue 10/29/24, 3:00 PM-4:00 PM

*The Art Center of Western Colorado
1803 North 7th Street
Grand Junction, CO 81501*

Peter Booth PhD



Currently an Advancement
Director at The Art Center of
Western Colorado.

Journey to Westwater and Beyond

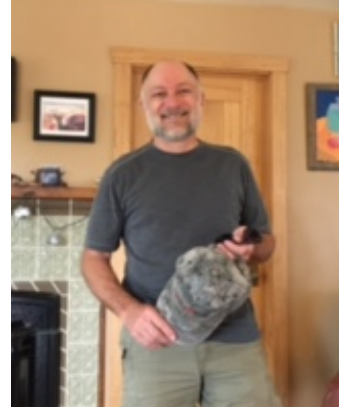
Join us for a field trip to Westwater, Utah. We will explore the area's history and other nearby forgotten settlements. The drive is approximately 100 miles round trip. We can coordinate carpooling. Bring a sack lunch or snacks for our stop at Westwater BLM boat launch. This field trip will not involve hiking. There will be restrooms available. (Class limit: 15)

Wed 10/16/24, 9:00 AM-1:00 PM

*Canyon View Park
730 24 Road
Grand Junction, CO 81501*

*Meet at park's northwest parking lot, just off 1-70 and the 24 Road exit.
We'll gather at the pavilion near the playground and coordinate carpooling.
There are restrooms there as well as at the Westwater boat launch.*

Pete Harris



Pete is a researcher of somewhat unknown local history.

Leitner-Poma Tour: Manufacturer of Ski Lifts and Urban Cable Transportation

Locally known for their ski lifts, Leitner-Poma manufactures arial and surface cable transportation systems. Instructor/tour guide, Steve Dugdale, will give a brief introduction of the history of Leitner-Poma and a description of the products manufactured, followed by a tour of the Grand Junction facility. The tour will visit various shops, including welding, electrical, painting and assembly areas.

For safety reasons no open-toed shoes are allowed and anyone wearing those will be turned away. The tour guide will provide safety glasses that are required to visit several of the shops. Safety glasses that fit over regular glasses will be available.

Class on Tuesday, Oct 29, 2024 (Class limit: 8):

Tue 10/29/24, 9:00 AM-10:15 AM

*2746 Seeber Drive
Grand Junction, CO 81506*

Directions: At the traffic circle where Horizon Drive goes to the airport terminal, take H Road west. Turn north onto Saccomanno Road and follow to Seeber Drive. Park in the visitor spaces or available open spaces at the front of the Leitner-Poma entry.

No open-toed shoes allowed on the tour.

- OR -

Class on Tuesday, Oct 29, 2024 (Class limit: 8):

Tue 10/29/24, 1:00 PM-2:15 PM

*2746 Seeber Drive
Grand Junction, CO 81506*

Directions: At the traffic circle where Horizon Drive goes to the airport terminal, take H Road west. Turn north onto Saccomanno Road and follow to Seeber Drive. Park in the visitor spaces or available open spaces at the front of the Leitner-Poma entry.

No opened-toed shoes allowed on the tour.

Steve Dugdale



Steve has 33 years with Leitner-Poma and is their designated tour guide.

Mary Oliver and Emily Dickinson, Friends or Foes?

The poetry of Mary Oliver is wonderfully accessible, inviting us into the natural world and beyond in ways that stir and inspire. Somewhat more difficult to access, Emily Dickinson's poetry may stir memories of the college classroom where we counted syllables and struggled to write the required analytical paper. In spite of obvious differences in approach, these two remarkable poets write about many of the same things, such as hope, grief, nature, death, religion, pain, and love. We will discuss the poets together in the class, comparing their work side by side, and discover what we think about their compatibility with one another and with us. (Class limit: 15)

Thu 10/31/24, 9:30 AM-11:00 AM

First Congregational - Chapel
1425 N 5th St
Grand Junction, CO 81501

Lyn Fraser



Lyn has taught at Texas A&M University and Colorado Mesa University.

Medicine 101: Annual Wellness Exams and Physicals

The pharmaceutical companies benefit the most when you are unhealthy and need prescriptions. Learn from Board Certified, Family Medicine Physician and Family Health West CEO Dr. Korrey Klein what you can do to remain healthy long into your aging years, along with how annual exams help, why it's important to build a relationship (and history) with a primary care physician, and why you should get annual physicals. All packed into an hour-and-a-half class, get ready to learn. (Class limit: 60)

Thu 11/14/24, 3:30 PM-5:00 PM

*Koinonia Church - Sanctuary
730 25 Road
Grand Junction, CO 81505*

Korrey Klein, MD



Dr. Klein is President and CEO of Family Health West

Meditation

Mindfulness and compassion are often referred to as the two wings of spiritual well being. Mindfulness helps us cultivate wisdom and equanimity to move through the ups and downs of life with perspective and peace. Compassion opens our hearts to the richness of life and awakens in us passion and a felt sense of connection with all life. This class is open to students with and without experience meditating. It includes instruction, guided practice, and time for questions and reflection. (Class limit: 30)

Fri 10/4/24, 1:30 PM-2:30 PM

*Koinonia Church - Sanctuary
730 25 Road
Grand Junction, CO 81505*

Kevin Watt



Board Certified Chaplain and
Spiritual Counselor, Certified
Mindfulness Meditation
Teacher

Movies: Mad About Film

Your Movie Team is made up of Dick Arnold, Joe Zeni, Wayne McCormick, and Eileen Bird. Films will be shown from several different genres and are selected from several sources: The National Film Registry, the American Film Institute's 100 Greatest Movies of All Time and its lists of great movies from each year, and from other sources. Most films shown are memorable or are considered "classics" and have earned this designation based on critical analysis and acclaim, not necessarily popularity. Some are foreign films. The presenter will preview the film and facilitate a brief discussion following the showing. The New Dimensions' film license prohibits publishing or marketing film titles in advance of showing. (Class limit: 100)

Fri 10/4/24, 6: 30 PM-9: 30 PM
Fri 10/11/24, 6: 30 PM-9: 30 PM

Movie Team

*Colorado Mesa University
Dominguez Hall Room 111
1248 Houston Avenue
Grand Junction, CO 81501*

Wed 10/16/24, 6: 30 PM-9: 30 PM

*Colorado Mesa University
Dominguez Hall Room 112
1248 Houston Avenue
Grand Junction, CO 81501*

Fri 10/18/24, 6: 30 PM-9: 30 PM
Fri 10/25/24, 6: 30 PM-9: 30 PM
Fri 11/1/24, 6: 30 PM-9: 30 PM
Fri 11/8/24, 6: 30 PM-9: 30 PM
Fri 11/15/24, 6: 30 PM-9: 30 PM

*Colorado Mesa University
Dominguez Hall Room 111
1248 Houston Avenue
Grand Junction, CO 81501*



Movie Enthusiasts

Nature Journaling

Learn how to draw a simple sketch! A wonderful way to explore your inner artist while observing the wonderful landscapes which surround us. A Nature Journal can be anything you want it to be. Nature journaling is about observing what is in front of us and learning how to do a quick sketch to capture the moment, or a feeling. Tap into your imagination and add poetry, prose, or personal reflective writing to your sketches. No experience required. There is a painting kit fee of \$25. For the \$25, the participant will receive a 5.5" x 8" watercolor journal, micron waterproof ink pen, mechanical pencil, water brush, a handmade tin with 12 different colors of Dr. PH Martin liquid watercolors, and watercolor paper for learning exercises. Participants will have a lunch break between 12:00-1:00 p.m. during this class. (Class limit: 10)

Tue 10/8/24, 10:00 AM-3:00 PM

*First Congregational - Chapel
1425 N 5th St
Grand Junction, CO 81501*

Barbara Miles



Retired attorney sharing her love of Nature Journaling using the right side of her brain.

Noble Ships of the American Desert: U. S. Army Camel Corps Experiment

In May of 1856, thirty-four camels were disembarked in Indianola, Texas. These animals, as well as the 41 camels that were shipped over later, became part of an Army experiment to determine their "usefulness in the transportation of military supplies" across the southwest desert. Thus started one of the more unusual episodes in the history of the American West. While the camels proved very effective, the coming of the Civil War ended the experiment. However, the history of these camels continued and some, such as the "Red Ghost," rode off into legend. The last of these animals did not pass away until 1934. (Class limit: 50)

Thu 11/7/24, 3:00 PM-4:30 PM

*The Art Center of Western Colorado
1803 North 7th Street
Grand Junction, CO 81501*

Peter Booth PhD



Currently an Advancement
Director at The Art Center of
Western Colorado.

Observing the Night Sky/Lecture

This class will cover the basic motions of the earth and how that changes what we see in the night sky throughout the night and year, describe the different types of objects we can observe with the naked eye and a small telescope, and discuss the different types of telescopes and basics of how they work.

This class has two separate sessions with different attendance limits.

Observing the Night Sky/Lecture is a lecture on reading the night sky.

Observing the Night Sky/Observatory is a tour of the Grand Mesa Observatory followed by a night sky viewing. Attendance for the tour and viewing is limited to 15 because of parking and observatory space limitations. You must register for the lecture class to be eligible for the observatory tour and night sky viewing. (Class limit: 60)

Fri 10/25/24, 1:30 PM-3:00 PM

*Unitarian Universalist Sanctuary
536 Ouray Avenue
Grand Junction, CO 81501*

Dr. Catherine Whiting



Dr. Whiting is an assistant professor of physics and astronomy at Colorado Mesa University.

Observing the Night Sky/Observatory

This class is a tour of the Grand Mesa Observatory and a night sky viewing using available telescopes and weather permitting. Dress for cold weather. Bring a red flashlight or headlamp if you have one.

This subject has two classes with different attendance limits. Observing the Night Sky/Lecture is a lecture on reading the night sky. Observing the Night Sky/Observatory is a tour of the Grand Mesa Observatory followed by a night sky viewing. Attendance for the tour and viewing is limited to 15 because of parking and observatory space limitations. You must register for the lecture class to be eligible for the observatory tour and night sky viewing. (Class limit: 15)

Fri 10/25/24, 6: 30 PM-8: 30 PM

*Grand Mesa Observatory
7475 Purdy Mesa Rd
Whitewater, CO 81527*

Watch out for wildlife on the road. There will be deer on the road at dusk.

Directions: Going south on Hwy 50 past Whitewater, take Kannah Creek Road east. Continue past the Kannah Creek Trail Head. The road will swing back to the west and turn into Purdy Road. The observatory will be on your left.

There are multiple routes to the Observatory and internet directions will vary. Please consult a map and choose the way that best suits.

Dr. Catherine Whiting



Dr. Whiting is an assistant professor of physics and astronomy at Colorado Mesa University.

Pakistan: Uneasy Ally or Terrorist Host?

Based on Steve Coll's books "Ghost Wars" and "Directorate S: The C.I.A. and America's Secret Wars in Afghanistan and Pakistan", and my experiences living in Islamabad and traveling as much as allowed for two years, we will discuss Pakistan's involvement in the War on Terror and whether they were truly aligned with the United States, or somewhere in the middle, balancing on the knife's edge. (Class limit: 30)

Tue 10/22/24, 3:00 PM-5:00 PM

*Eureka! McConnell Science Museum
1400 North 7th Street
Grand Junction, CO 81501*

For parking, from 7th Street turn east on Kennedy Avenue and park behind the New Life Church across the street from the museum.

Jon Larsen



Jon Larsen, Retired Foreign Service

Palisade Insectary Tour

The insectary opened in 1945 to rear a biocontrol agent in order to protect our local peaches from the Oriental Fruit Moth. The Insectary now releases and monitors about 20 different species of biological control agents for use against both weeds and insect pests. Led by Insectary scientists, the tour will share the history of bio-control of weeds and learn how insects are raised and what they do. (Class limit: 20)

Thu 10/3/24, 1:00 PM-3:00 PM

*Palisade Insectary
750 37 8/10 Rd
Palisade, CO 81526*

Directions to Insectary: From Patterson travel through Clifton. It turns into Highway 6 to Palisade. Turn left on Elberta (GPS says 37 3/10) in Palisade. Turn right on 1st Street (GPS also calls it G 4/10 Road). Turn left on Main (GPS also calls it 37 8/10 Road). The insectary is the second set of buildings on the right. Buildings are beige and there is no sign.

From I70: Take the Palisade exit # 42. Turn right onto Elberta (also called 37 3/10 Road). Turn left onto W 1st Street (GPS calls it G 4/10). Turn left onto Main Street (GPS calls it 37 8/10). The insectary is the second set of buildings on the right. Buildings are beige and there is no sign.

Colorado Department
of Ag Scientists

People of the Earthlodge: Lifeways of the Hidatsa

A Knife River Indian Villages National Historic Site Park Ranger will describe the homes of the Tribes of the Northern Great Plains from inside of a lifesize replica earthlodge (weather permitting). He also will describe the roles and responsibilities of people within the community, trade relations, and the effects of trade on technology used by the Mandan, Hidatsa and Arikara during the 1800's. Earthlodge people hunted bison and other game, but were in essence farmers living in villages along the Missouri River and its tributaries. The site was a major Native American trade center for hundreds of years prior to becoming an important marketplace for fur traders after 1750. (Class limit: 59)

Tue 10/15/24, 11:00 AM-12:00 PM

Zoom

Darian Kath



A park ranger for 20 years, Darian has spent the last 7 years at Knife River Indian Village.

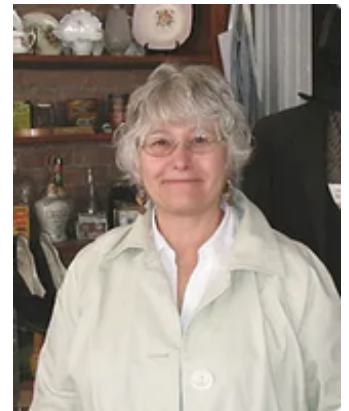
Photo History of Ouray County Mining

Gail Zanett Saunders, photo archivist for the Ouray County Historical Society, will present an extensive photo collection of the history of mining in Ouray County. Photos will show mining and freighting activities starting in 1876, when the town of Ouray was incorporated, through the decline in mining activities in the 1930s. Recovering ore in the rugged San Juan Mountains was difficult and dangerous. Avalanches, accidents, and pneumonia took the lives of many miners. Immigrants, mainly from Austria, Italy, and Sweden, travelled to this remote region for work; most were unmarried and lived in crowded boarding houses built near the mines. Photos include examples of mining practices such as hand drilling, use of explosives, trams, and milling processes. The photos will be accompanied by a historic reading. Gail is a historian and reads her text to ensure accuracy and completeness. Reading text is an accepted practice for formal history presentations. (Class limit: 50)

Mon 10/21/24, 10:00 AM-11:30 AM

*Unitarian Universalist Sanctuary
536 Ouray Avenue
Grand Junction, CO 81501*

Gail Zanett Saunders



A former Colorado History teacher, Gail is a Ouray County Historical Society Board member.

Powderhorn Mountain Resort: An Inside Look

Colorado's westernmost ski area sits atop the Grand Mesa, just 45 minutes outside of Grand Junction. Learn about this family-friendly resort from its history, to current operations, to exciting future plans. (Class limit: 75)

Tue 10/1/24, 3:00 PM-4:30 PM

*Unitarian Universalist Sanctuary
536 Ouray Avenue
Grand Junction, CO 81501*

Ryan Robinson



Ryan Robinson is assistant general manager at Powderhorn Mountain Resort.

Promise of College – New Scholarship Programs in Colorado

This class provides a brief history and context to the recent formation of “college promise” programs in Colorado. The need, community and individual benefits, and funding models will be covered. Which promises in Colorado exist and assessing them will be examined. Local education and youth advocate Joe Higgins will participate as a guest speaker. Colorado's Governor has recently signed the "Colorado Promise" legislation. (Class limit: 30)

Tue 10/15/24, 1:00 PM-2:00 PM

*Koinonia Church - Sanctuary
730 25 Road
Grand Junction, CO 81505*

Rick Adleman



Rick Adleman, MBA, CFRE is a 28-year veteran of fundraising and non-profit administration.

Restoring The Historic Crissey House in Palisade: Adventures in Amateur Archaeology

Join JoAnn as she shares tales of their adventures, what it's like living in and rehabilitating a property on the National Register of Historic Places, what it means to be an amateur archaeologist in your own home, and why they'd do it all again in a heartbeat. (Class limit: 30)

Tue 10/29/24, 1:00 PM-2:30 PM

*Eureka! McConnell Science Museum
1400 North 7th Street Blue Room
Grand Junction, CO 81501*

For parking, from 7th Street turn east on Kennedy Avenue and park behind the New Life Church across the street from the museum.

JoAnn Rasmussen



JoAnn Rasmussen is the Chair of the Palisade Historical Society.

Science Behind the Exhibits with Founder John McConnell - EUREKA! McConnell Science Museum

Come learn about the history of EUREKA! McConnell Science Museum with its founder, John McConnell, and then enjoy spending time exploring the museum and learning about the science behind the hands-on interactive exhibits. (Class limit: 25)

Mon 9/30/24, 1:00 PM-2:30 PM

*Eureka! McConnell Science Museum
1400 N. 7th Street
Grand Junction, CO 81501*

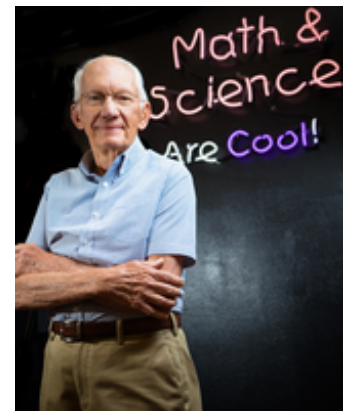
For parking, turn east on Kennedy Avenue off of N. 7th Street and park in the parking lot shared with the New Life Church, south across the street from Eureka!

Briana Board



Program Director for Eureka! Science Museum

John McConnell



Founder of the EUREKA! McConnell Science Museum

Shoshone Water Rights: Are they worth \$98.5 million?

The Shoshone water rights are used to generate electricity at the Shoshone Hydroelectric Plant, located in Glenwood Canyon. The water rights are owned by Xcel Energy. In December, 2023, the Colorado River District in Glenwood Springs entered into a contract with Xcel to purchase the Shoshone water rights for \$98.5 million. This course will discuss the importance of these water rights to Western Colorado, the benefits they provide, past efforts to maintain these water rights and the River District's current contract to purchase them. Are they worth almost \$100 million? Attend this course and you'll find out! (Class limit: 50)

Tue 10/1/24, 10:00 AM-12:00 PM

*Unitarian Universalist Sanctuary
536 Ouray Avenue
Grand Junction, CO 81501*

Mark Hermundstad



Mark is a retired Water Rights Attorney who has been working on Western Slope water issues for over 30 years.

Target Earth: Rocks and Snowballs from Afar, and Their Impacts

Have you ever observed the Moon through a telescope or binoculars and marveled at its pock-marked surface? Have you seen NASA's pictures of impact craters on Mars and other bodies in our solar system? Aerial photography and satellite imagery reveal some significant impact structures on the face of planet Earth, as well. This program explores the mechanics of impact and the evolution of our understanding about astroblemes, literally "star wounds." (Class limit: 45)

Tue 10/1/24, 1:30 PM-2:30 PM

*Unitarian Universalist Sanctuary
536 Ouray Avenue
Grand Junction, CO 81501*

Hank Schoch



Hank Schoch is a retired national park ranger, cabinetmaker, and a self-taught photographer.

Textile World - Animal to Finished Product

Meet the alpaca, a fiber animal. Learn about the journey that takes their wool from preparing the raw fibers, through processing the wool, to spinning the yarns, and finally reaching the final products made from the fibers. Suncrest Orchard Alpaca and Fiber Works raises alpacas from babies through adults and processes fibers from their alpacas as well as from 350 farms from as far away as Japan. (Class limit: 30)

Fri 10/11/24, 1:00 PM-3:00 PM

*Suncrest Orchard Alpacas and Fiber Works
3608 E 1/4 Road
Palisade, CO 81526*

Mike McDermott



Mike McDermott, alpaca farmer and wool processor

Tour CMU Tech (Western Colorado Community College)

CMU Tech offers career-oriented associate degrees and certificate programs that can put students on the fast track to a better future. Come tour the campus and learning spaces where students build skills to work in a myriad of technical trades. (Class limit: 25)

Tue 10/8/24, 2:00 PM-4:00 PM

*CMU Tech
2508 Blichman Avenue
Grand Junction, CO. 81505*

Meet in the lobby of Building B to begin the tour.

Kelly Reuss



Director of Student Services
at Western Colorado
Community College.

Tour of Lyle Nichols Designs on East Orchard Mesa

Lyle Nichols, Western Slope Artist, will open his art yard and give a tour of his sculptures. This class is for those curious about what is over the fence at Lyle Nichols' property on East Orchard Mesa. Meet Lyle and walk about the property as he discusses his craft of finding discards and repurposing them into works of art. (Class limit: 15)

Thu 10/31/24, 1:00 PM-2:00 PM

Lyle Nichols Designs
511 35 1/2 Road
Palisade, CO 81526

Lyle Nichols



Lyle Nichols' art creations can be found in downtown Palisade; throughout the Grand Valley; Westminster, Colorado; Moab, Utah; and Cheyenne, Wyoming.

Tour of the Rashleigh Regional History Room

The Mesa County Libraries houses the Rashleigh Regional History Collection. This collection includes rare and unique items that specifically relate to local prehistory and history. History Librarian and CAS-GJ member, Ike Rakiecki, will give a tour of the collection and provide information and details about what resources are available. An overview of online local history resources will also be discussed. (Class limit: 20)

Fri 10/18/24, 1:30 PM-3:00 PM

*Mesa County Public Library--Lower Level
433 North 6th Street
Grand Junction 81501*

Ike Rakiecki



Ike is a librarian who is responsible for the Rashleigh Regional History Room at MCPL.

Uintah Railway, the Gilsonite Route

The Uintah Railway was one of the steepest, most crooked narrow-gauge railroads in North America. It hauled only one commodity, Gilsonite. The Uintah ran from the Grand Valley over Baxter Pass in the Bookcliffs to the Uintah Basin. Learn the rich history of this unique Colorado/Utah railroad. (Class limit: 25)

Thu 10/24/24, 5:00 PM-6:15 PM

*Cross Orchards Historic Site
3073 Patterson Road
Grand Junction, CO 81504*

Matt Darling



Curator of Cross Orchards.
The Museums of Western
Colorado's railroad historian.

Volunteering on Your Public Lands

This course will discuss the critical role of volunteers in stewarding our public lands, and a new collaborative effort called the West Slope Outdoor Volunteers, to streamline efforts to build and utilize a skilled volunteer corps. Instructors will highlight opportunities to volunteer outdoors with multiple organizations, what to expect, and how to get involved. (Class limit: 35)

Wed 10/2/24, 5:00 PM-6:30 PM

*Eureka! McConnell Science Museum
1400 North 7th Street Blue Room
Grand Junction, CO 81501*

For parking, from 7th Street turn east on Kennedy Avenue and park behind the New Life Church across the street from the museum.

Libby Collins



Project Manager for Colorado West Land Trust to preserve and develop trail-based recreation

Morgan Rossway



Volunteer & Outreach Coordinator for Colorado Canyons Association

Walking Meditation

Walking Meditation can be a weekly meditative approach using a moderate-to-easy exercise activity. It helps with clearing and focusing the mind, stress reduction, increase of energy, and a start in controlling invasive thinking. It is a form of "centering" which is an ancient technique teaching you to focus on "here and now", and taking power away from outside concerns and negative thoughts. The hiking trail we will use is mostly flat but has rocks and is uneven. Good tennis or hiking shoes are recommended. (Class limit: 11)

Wed 10/2/24, 2:00 PM-3:30 PM

Riggs Hill Parking Lot. Riggs Hill is about one mile west of the traffic circle intersection of Broadway and South Broadway (Redlands Parkway) and is off of South Broadway.

Steve Clark



Degree in geology, docent at Dinosaur Journey, mental health therapist, retired teacher. Has studied meditation/walking meditation.

Weather Forecasting in the Grand Valley

Reliable weather forecasts are important to all of us as we make decisions about how to be prepared and stay safe in our daily lives. Over the past several decades, forecasting has improved significantly, with the introduction of better technology and tools to collect, analyze and communicate weather data. Grand Junction KKCO 11 meteorologist, Stephen Bowers, will introduce us to the science of weather forecasting, sharing the basic concepts necessary to understand and forecast our dynamic Colorado weather. He'll explain the technology that he relies on to provide our daily forecasts – plus share some insights into the forecasting challenges unique to our area. (Class limit: 75)

Thu 10/24/24, 12:00 PM-2:00 PM

*Unitarian Universalist Sanctuary
536 Ouray Avenue
Grand Junction, CO 81501*

Stephen Bowers



KKCO 11 Meteorologist

What is a Portrait?

Everyone is familiar with images of friends and family, and of others, and often consider them as portraits. We assume that the portrait image shows a good identifiable likeness of the person, but also is commonly linked to a setting or event, and/or seeks to show the person in a positive way. Is a snapshot a portrait? A mug shot? A head shot? A selfie? An unknown or imaginary person? Can a portrait involve action? Does a portrait have an agenda? We will explore these issues with examples from ancient Rome to the present, and will not find easy answers. (Class limit: 30)

Tue 10/22/24, 11:00 AM-12:30 PM

*Eureka! McConnell Science Museum
1400 North 7th Street
Grand Junction, CO 81501*

For parking, from 7th Street turn east on Kennedy Avenue and park behind the New Life Church across the street from the museum.

Lawrence Nees



Professor of Art History and
Humanities at the University
of Delaware 1978-2023
(retired)

What's Your Healthspan?

The term "lifespan," which refers to the total number of years we live, is well known. A new concept called "healthspan" is gaining relevance in the scientific and medical fields: it refers to a period of life when we are healthy, vibrant, and free from serious and chronic illnesses. This class will review the science of major chronic diseases, including heart disease, diabetes, cardiovascular disease, metabolic syndrome, and dementia. Discussion will include traditional medical and surgical treatments along with the evidence-based results of "healthspan" lifestyle choices emphasizing physical, mental and emotional well-being. The class will integrate medical and scientific literature, including concepts from Peter Attia, M.D.'s, book "Outlive: The Science & Art of Longevity" as well as the instructor's powerful personal experience. Rather than being powerless to aging, a focus on integrating nutrition, exercise, mental health and social connections can mitigate chronic disease and contribute to a vibrant, longer healthspan. (Class limit: 50)

Mon 11/11/24, 2:00 PM-4:00 PM

*Koinonia Church - Sanctuary
730 25 Road
Grand Junction, CO 81505*

Tom Politzer



Dr. Politzer is a neuro-optometrist who credits "healthspan" principles to his good health.

Why Not Sourdough?

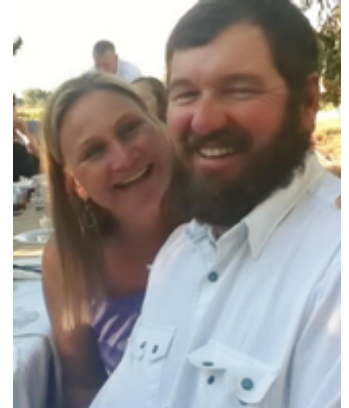
Sourdough baking is at the root of Pam's family. Pam and her husband have spent many years together studying sourdough fermentation, grain, milling flour, and networking and connecting with other sourdough souls. While living on a corn farm on the Hamakua Coast of the Big Island of Hawaii, they started and maintained their own starter, building a bakery business which has now returned to Grand Junction. She has much to share about what sourdough culture brings to our health and relationships. (Class limit: 35)

Mon 10/28/24, 9:00 AM-11:00 AM

*Eureka! McConnell Science Museum
1400 North 7th Street
Grand Junction, CO 81501*

For parking, from 7th Street turn east on Kennedy Avenue and park behind the New Life Church, across the street from the museum.

Pam Harsh



Owner, operator of Kulina
Lani Organic Sourdough
Bakery

Word Play 3: Freudian Slips, Puns, Jokes, and Linguistic Miscellany

In this one-session course, we'll first take a whirlwind tour to explain how our phonology (sound system), orthography (system of spelling and writing), lexicon (vocabulary), syntax (sentence structure), and semantics (word meaning in context) determine meaning and function in English. Then we'll explore how these components of language can create a great deal of confusion--some of it fun and some of it serious--in both spoken and written English. (Class limit: 25)

Wed 11/6/24, 6:00 PM-8:00 PM

*Eureka! McConnell Science Museum
1400 North 7th Street
Grand Junction, CO 81501
For parking, from 7th Street turn east on Kennedy Avenue and park behind
the New Life Church, across the street from the museum.*

Maureen Neal



Professor of English: CMU (retired), former high school teacher.

Yellowstone Geology

Join a Yellowstone Park Ranger to learn more about Yellowstone's Geology. The ranger will give you an overview of Yellowstone National Park and talk specifically about the geysers, hot springs, fumaroles, and mud pots. (Class limit: 80)

Thu 11/14/24, 9:00 AM-10:00 AM

Zoom

Yellowstone Ranger



A Ranger from Yellowstone National Park will present the program

Yoga Lite

After practicing Yoga for almost 10 years Laura was inspired to attend Yoga Teacher Training. This training taught her the enormous benefits of Yoga for everyone, especially as we age. Each session will include a gentle yoga practice including gentle movements, balance work, breath work, and meditation. Half the class will be lying on our backs and half will be standing. Please bring mats and props, if you have them! Laura will have extras if needed. (Class limit: 16)

Wed 10/16/24, 3:15 PM-4:30 PM
Wed 10/23/24, 3:15 PM-4:30 PM
Wed 11/6/24, 3:15 PM-4:30 PM
Wed 11/13/24, 3:15 PM-4:30 PM

*Unitarian Universalist--Downstairs
536 Ouray Avenue
Grand Junction, CO 81501*

Laura Daniels



Laura is a 285 hour Certified Yoga Instructor.

Your Public Art Slideshow

Join Sarah Dishong as she looks back on the first 40 years of Art on the Corner. She will show a series of videos featuring some of the artists who helped create the program, artists who were long-time contributors, business owners from 1984, and a video from 2018. She will share various bits of history and hopefully have a couple of guest speakers. (Class limit: 35)

Tue 10/8/24, 10:30 AM-12:00 PM

*Eureka! McConnell Science Museum
1400 North 7th Street
Grand Junction, CO 81501*

For parking, from 7th Street turn east on Kennedy Avenue and park behind the New Life Church across the street from the museum.

Sarah Dishong



Sarah Dishong is the Project Coordinator for Downtown Grand Junction.